

Heritage Tree Inventory and Summary Report

The Ridge on Williams Creek Heritage Tree Inventory

March 2022

Prepared for:

Thomas M. Kretz
TMK Development, LLC
7921 Kimlough Drive
Indianapolis, Indiana 46240

Prepared by:

Todd Gillian
Root & Twig, LLC
6270 Valleyview Drive
Fishers, Indiana 46038

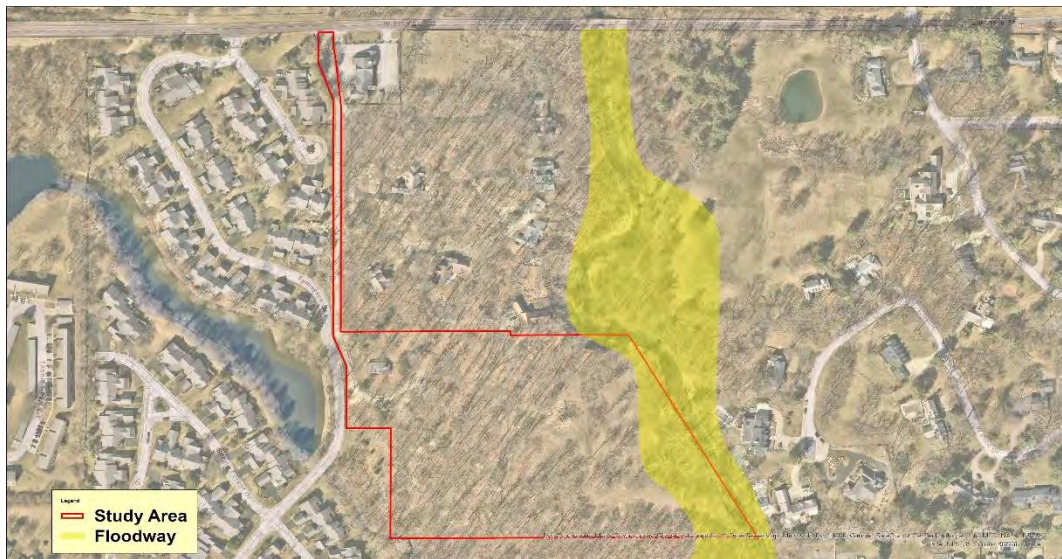


Thomas M. Kretz
TMK Development, LLC
Indianapolis, Indiana 46240

RE: Heritage Tree Inventory for The Ridge on Williams Creek at 859 West 96th Street, Indianapolis, Indiana, Washington Township, Marion County

Assignment

An inventory of all trees measured 8 inches or larger in diameter at breast height (DBH) within the surveyed area that is outside the floodway. Trees at 6 inches DBH or larger were inventoried in the floodway. The survey area is 11.639 acres located at 859 West 96th Street in Indianapolis, Indiana. A visual representation of the surveyed area is located below:



The area depicted in the red box on the map is the location of the trees surveyed. The area depicted in yellow is the floodway.

The GIS-based tree inventory collected the physical location and attributes associated with each tree in the study area. The summary report includes:

- a list of all the trees inventoried,
- a list of Heritage Trees inventoried on site,
- tree preservation plan guidelines for trees that are recommended to be retained,
- and maps associated with each task.

Data Collections Methods

Esri® Field Maps Mobile application connected to Trimble® R1 GNSS Receiver was used for data collection. Study area boundary was provided from parcel data downloaded from Marion County website. Each tree was numbered in the field by a round numbered aluminum tag. The attributes collected during the inventory include:

- GPS location of each tree.

- Tree number- The tree was tagged in the field and the associated number was collected in the data.
- Tree species- Each tree was identified by genus and species using botanical and common names.
- Tree size- Each tree was measured at diameter at breast height (DBH) or 4.5 feet above the ground.
- Condition- The overall condition of each tree was collected based on a condition rating system that was an assessment of the visible roots, branch structure, and foliage conditions.
 - Good: >80% condition rating
 - Fair: 80-50% condition rating
 - Poor: <50% condition rating
 - Dead: 0% condition rating
- Maintenance-
 - Removal – A defect(s) of the tree cannot be practically or cost-effectively remediated to mitigate the risk. This includes dead and dying trees, structural and stability defect(s).
 - Retain – tree is not dead, significantly, or terminally diseased, a threat to public health or safety, or is not of an undesirable or nuisance species.

Discussion

A total of 636 trees were inventoried. A map and table of inventoried trees in Appendix A. The dominant tree specie inventoried was sugar maple (*Acer saccharum*) at 18%. Other notable species present was bitternut hickory (*Carya cordiformis*) 12%, common hackberry (*Celtis occidentalis*) 11%, and American beech (*Fagus grandifolia*) 7%. The average DBH was 17.03 inches. There was evidence of recent invasive species control of non-native honeysuckle spp. (*Lonicera* spp.) and oriental bittersweet (*Celastrus orbiculatus*). Other notable non-native invasive specie present on site was tree of heaven (*Ailanthus altissima*).

A total of 177 Heritage Trees were inventoried. A map and a table of the Heritage Trees is located in Appendix B. Per Indianapolis City Code a heritage tree is defined as:

1. A tree over 18 inches diameter at breast height (DBH) and one of the heritage tree species. Heritage tree species include: Sugar Maple (*Acer saccharum*), Shagbark Hickory (*Carya ovata*), Hackberry (*Celtis occidentalis*), Yellowwood (*Cladrastus kentukea*), American Beech (*Fagus grandifolia*), Kentucky Coffeetree (*Gymnocladus dioica*), Walnut or Butternut (*Juglans*), Tulip Poplar (*Liriodendron tulipifera*), Sweet Gum (*Liquidambar styraciflua*), Black Gum (*Nyssa sylvatica*), American Sycamore (*Platanus occidentalis*), Eastern Cottonwood (*Populus deltoides*), American Elm (*Ulmus americana*), Red Elm (*Ulmus rubra*) and any oak species (*Quercus*, all spp.)

Tree Preservation Plan and Recommendations

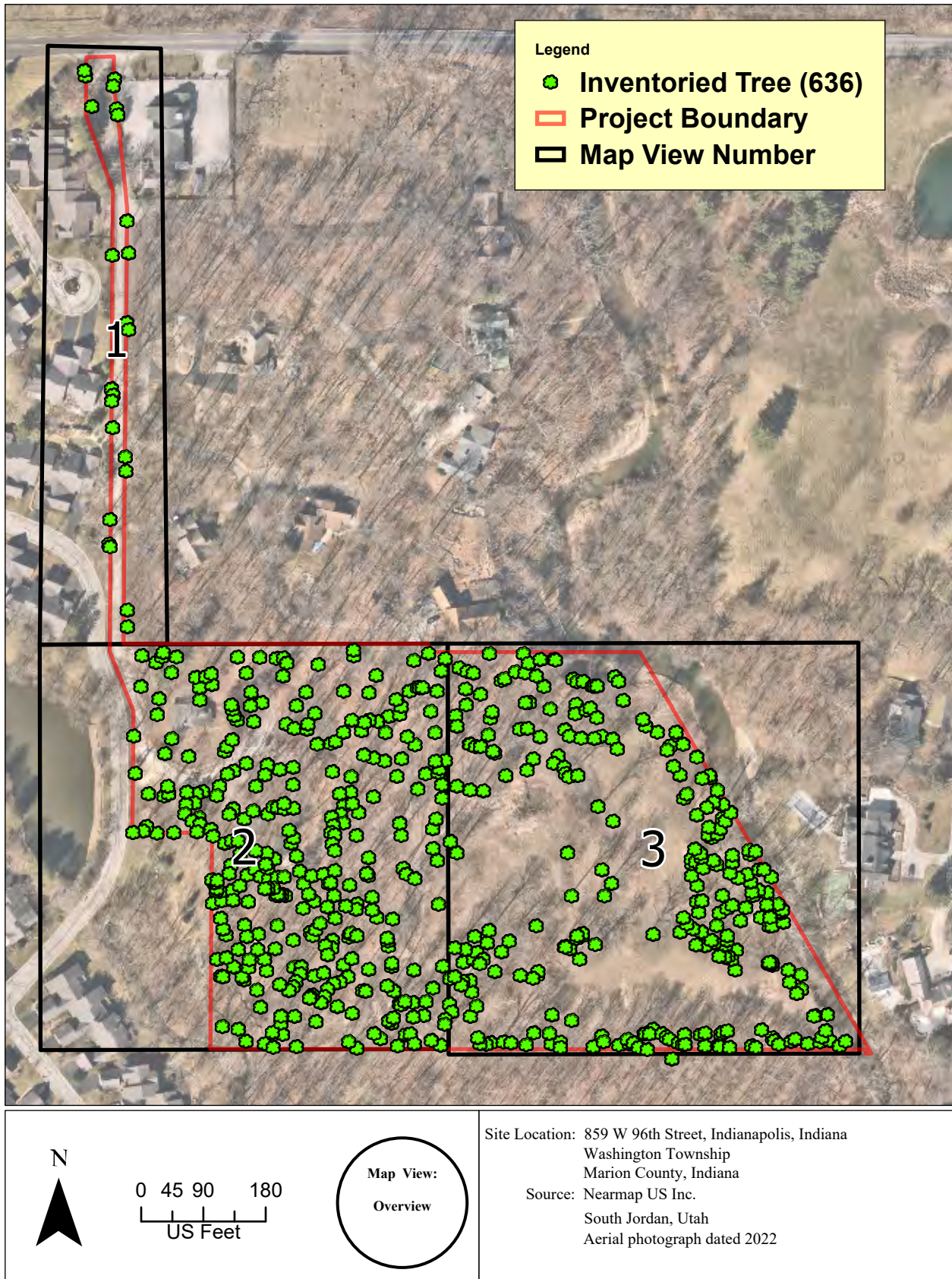
A total of 137 Heritage Trees have been recommended for retention during site development. Critical root zone (CRZ) was determined by the area of soil around a tree where the minimum amount of roots considered critical to the structural stability or health of the tree are located. Tree protection zone (TPZ) was determined by species tolerance to development impacts, tree age, and distance from the trunk (Fite and Smily, 2016). TPZ is the defined area

which certain activities are prohibited or restricted to prevent or minimize potential injury to designated trees. The TPZ and CRZ areas should be protected during all phases of land development. Any land development activity to occur near the trees should be reviewed by a qualified consultant. A qualified consultant is an ISA Board Certified Master Arborist® or Registered Consulting Arborist®. A map and a table of the Heritage Trees with CRZ and TPZ zones is located in Appendix C.

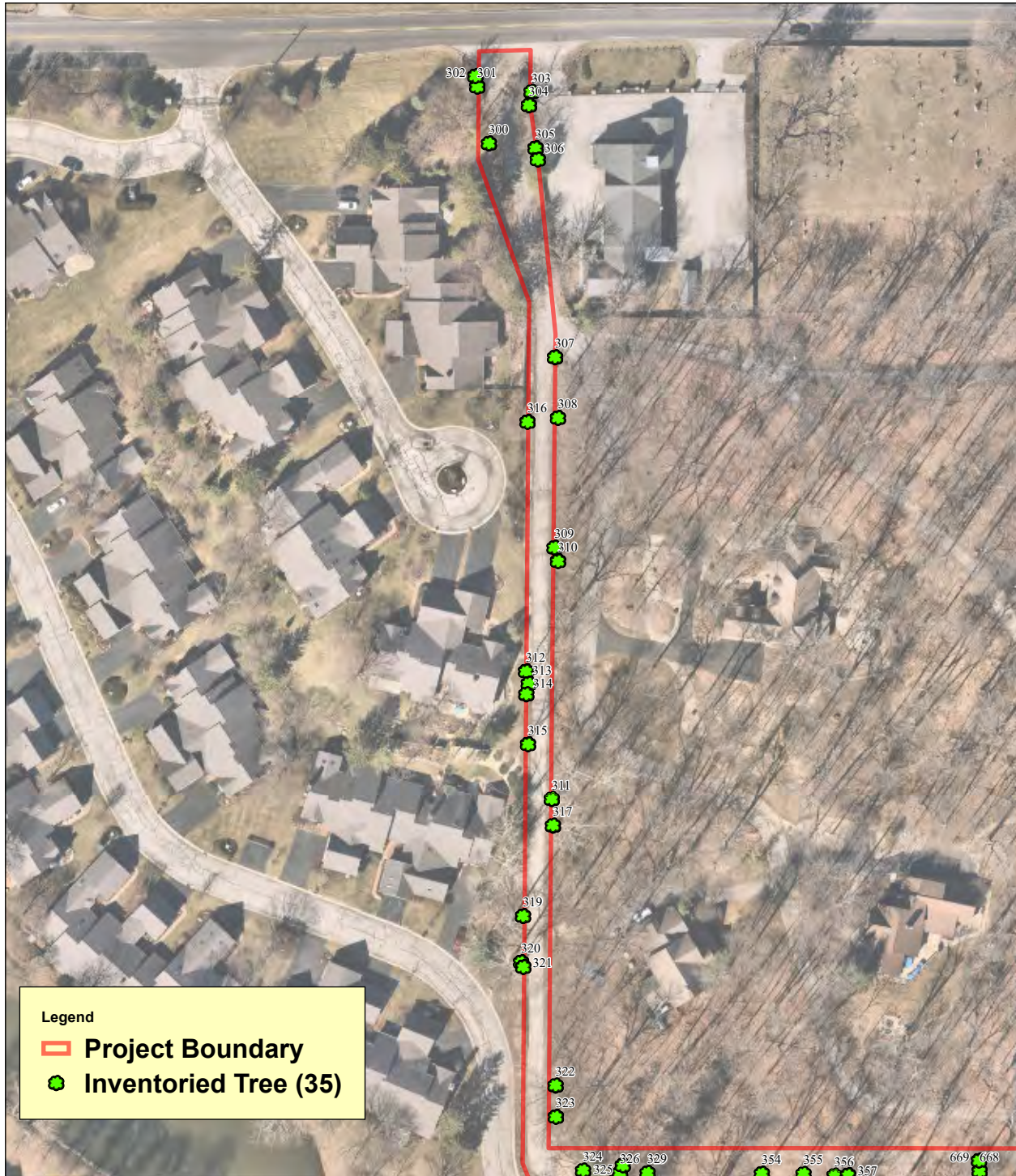
The following recommendations should be followed to improve the health of preserved trees and reduce impacts from land development:

1. Before beginning any land development activity, the contractor should meet with qualified consultant onsite to review all work procedures, storage areas, and tree protection measures.
2. Tree protection fencing shall be installed around all TPZ areas prior to any land development activity. These guidelines should be followed throughout construction:
 - a. A minimum 4-foot chain link
 - b. Fence post shall be placed no further than 15 feet apart
 - c. A visible warning sign indicating that the area is the “Tree Protection Zone” and “the fence shall not be moved or removed”
 - d. Construction trailers, traffic, and storage areas must always remain outside the fence. No materials, equipment, spoil, or waste/washout water may be deposited, stored, or parked within the TPZ fence.
3. Any roots over 1 inch in diameter should be pruned by hand pruning tools or mechanical root pruning tools
 - a. Soil excavation using air excavation tools, pressurized water, or by hand tools, followed by selective root cutting
 - b. Cutting through the soil along a predetermined line on the surface using a tool specifically designed to cut roots.
4. All underground utilities, drain lines, or irrigation lines shall be routed outside of tree TPZ. If lines must enter TPZ, they shall be tunneled or bored.
5. Organic mulch should cover the entire TPZ at a rate of 2-4 inches during site development and post-development. Mulch should not touch the stem of the tree.
6. Provide supplemental irrigation during periods of drought to reduce water stress during site development and post-development.
7. A treatment of plant growth regulator (Paclobutrazol 22.3%) is recommended for trees that are impacted by site development. All treatments shall comply in accordance with label instructions and ANSI A300 standards.
8. A soil analysis should be performed and soil amendments should be applied based on results and recommendations.
9. Pruning for building and/or construction clearance shall be performed by an ISA Certified Arborist®. All pruning shall comply in accordance with ANSI A300 standards.
10. Pests that can have a detrimental affect tree health should be controlled before and during construction.

Appendix A Location of Inventoried Trees



Appendix A Location of Inventoried Trees



Legend

- ▬ Project Boundary
- Inventoried Tree (35)

N

0 25 50 100

US Feet

Map View:

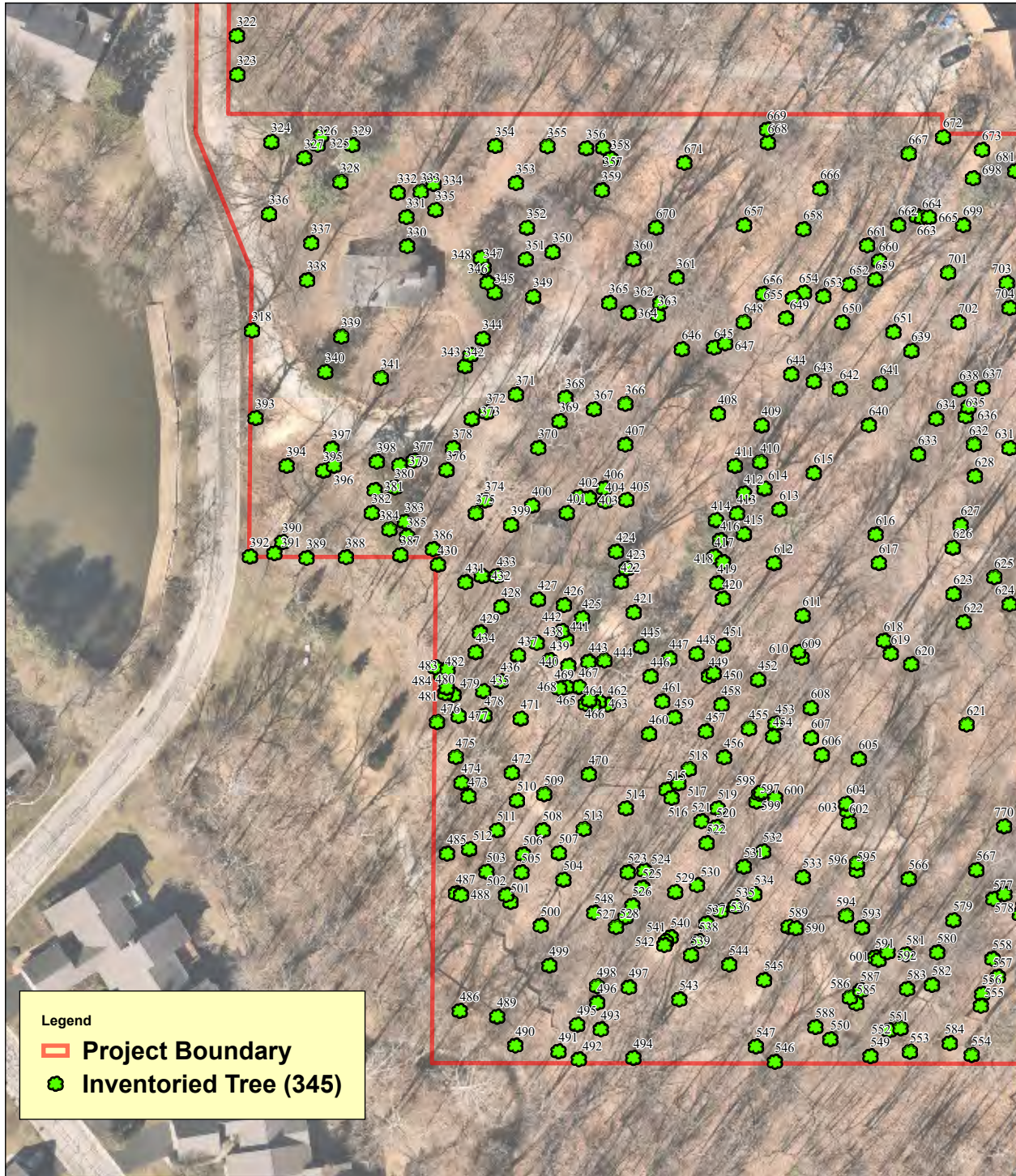
1

of 3

Site Location: 859 W 96th Street, Indianapolis, Indiana
 Washington Township
 Marion County, Indiana

Source: Nearmap US Inc.
 South Jordan, Utah
 Aerial photograph dated 2022

Appendix A Location of Inventoried Trees



Legend

- ▬ Project Boundary
- Inventoried Tree (345)

N

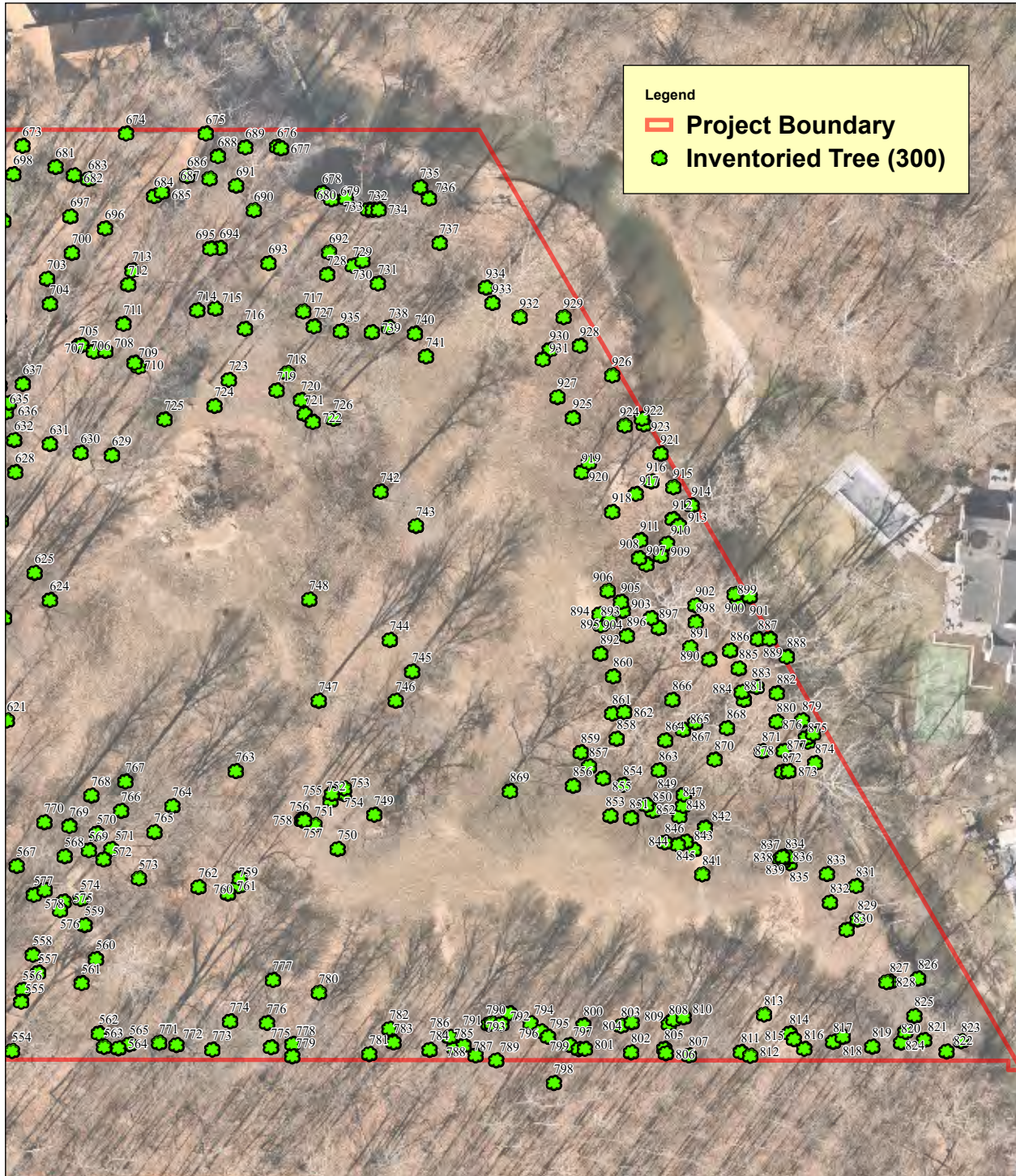
0 20 40 80
US Feet

Map View:
2
of 3

Site Location: 859 W 96th Street, Indianapolis, Indiana
Washington Township
Marion County, Indiana

Source: Nearmap US Inc.
South Jordan, Utah
Aerial photograph dated 2022

Appendix A Location of Inventoried Trees



Legend

- ▬ Project Boundary
- Inventoried Tree (300)

N

0 20 40 80

US Feet

Map View:

3

of 3

Site Location: 859 W 96th Street, Indianapolis, Indiana
 Washington Township
 Marion County, Indiana
 Source: Nearmap US Inc.
 South Jordan, Utah
 Aerial photograph dated 2022

Appendix A. Inventoried Trees Table

Tree ID	Common name	Botanical Name	DBH	Condition	Recommendation	Notes	Multi-stem
300	eastern white pine	Pinus strobus	16	Fair	Retain		
301	blue spruce	Picea pungens	10	Dead	Remove		
302	blue spruce	Picea pungens	12	Dead	Remove		
303	crabapple spp	Malus spp	14	Poor	Remove	7 7	Yes
304	common hackberry	Celtis occidentalis	24	Poor	Remove		
305	black walnut	Juglans nigra	17	Poor	Remove		
306	blue spruce	Picea pungens	8	Poor	Remove		
307	common hackberry	Celtis occidentalis	11	Fair	Retain		
308	sugar maple	Acer saccharum	9	Fair	Retain		
309	American elm	Ulmus americana	19	Poor	Remove		
310	common hackberry	Celtis occidentalis	11	Fair	Retain		
311	white poplar	Populus alba	30	Poor	Remove		
312	black walnut	Juglans nigra	18	Poor	Remove		
313	black walnut	Juglans nigra	13	Poor	Remove		
314	black walnut	Juglans nigra	11	Poor	Retain		
315	bitternut hickory	Carya cordiformis	17	Poor	Retain		
316	American elm	Ulmus americana	9	Poor	Remove		
317	white poplar	Populus alba	24	Fair	Remove		
318	white oak	Quercus alba	35	Fair	Retain		
319	bitternut hickory	Carya cordiformis	9	Fair	Retain		
320	black cherry	Prunus serotina	9	Poor	Remove		
321	bitternut hickory	Carya cordiformis	9	Fair	Retain		
322	chinquapin oak	Quercus muehlenbergii	20	Fair	Retain		
323	chinquapin oak	Quercus muehlenbergii	16	Fair	Retain		
324	eastern white pine	Pinus strobus	18	Poor	Retain		
325	eastern white pine	Pinus strobus	11	Fair	Retain		
326	bitternut hickory	Carya cordiformis	16	Fair	Retain		
327	eastern white pine	Pinus strobus	22	Fair	Retain		
328	American elm	Ulmus americana	8	Fair	Retain	5 3	Yes
329	eastern white pine	Pinus strobus	25	Fair	Retain		
330	northern red oak	Quercus rubra	15	Fair	Retain		
331	white oak	Quercus alba	28	Fair	Retain		
332	bitternut hickory	Carya cordiformis	16	Fair	Retain		
333	white oak	Quercus alba	15	Fair	Retain		
334	black walnut	Juglans nigra	22	Fair	Retain		
335	white oak	Quercus alba	12	Good	Retain		
336	white oak	Quercus alba	42	Good	Retain		
337	bitternut hickory	Carya cordiformis	22	Good	Retain		
338	bitternut hickory	Carya cordiformis	18	Good	Retain		
339	black locust	Robinia pseudoacacia	20	Fair	Retain		
340	Norway spruce	Picea abies	17	Fair	Retain		
341	sugar maple	Acer saccharum	22	Poor	Remove		
342	bitternut hickory	Carya cordiformis	24	Fair	Retain		
343	shagbark hickory	Carya ovata	17	Fair	Retain		
344	bitternut hickory	Carya cordiformis	17	Good	Retain		
345	Norway spruce	Picea abies	12	Fair	Retain		
346	Norway spruce	Picea abies	13	Fair	Retain		
347	Norway spruce	Picea abies	9	Fair	Retain		
348	Norway spruce	Picea abies	12	Fair	Retain		
349	white oak	Quercus alba	31	Fair	Retain		
350	bitternut hickory	Carya cordiformis	19	Good	Retain		
351	chinquapin oak	Quercus muehlenbergii	23	Good	Retain		
352	American beech	Fagus grandifolia	28	Poor	Retain		
353	bitternut hickory	Carya cordiformis	19	Fair	Retain		
354	common hackberry	Celtis occidentalis	30	Poor	Remove		
355	bitternut hickory	Carya cordiformis	20	Fair	Retain		
356	sugar maple	Acer saccharum	10	Good	Retain		
357	American beech	Fagus grandifolia	22	Poor	Retain		

Appendix A. Inventoried Trees Table

358	American beech	Fagus grandifolia	25	Poor	Remove		
359	American beech	Fagus grandifolia	19	Poor	Remove		
360	American beech	Fagus grandifolia	29	Poor	Remove		
361	American beech	Fagus grandifolia	33	Poor	Retain		
362	sugar maple	Acer saccharum	9	Fair	Retain		
363	sugar maple	Acer saccharum	13	Fair	Retain		
364	tuliptree	Liriodendron tulipifera	14	Good	Retain		
365	American beech	Fagus grandifolia	34	Poor	Remove		
366	tuliptree	Liriodendron tulipifera	18	Fair	Retain		
367	American beech	Fagus grandifolia	20	Fair	Retain		
368	American sycamore	Platanus occidentalis	32	Good	Retain		
369	American beech	Fagus grandifolia	18	Poor	Remove		
370	American beech	Fagus grandifolia	29	Poor	Remove		
371	bitternut hickory	Carya cordiformis	20	Fair	Retain		
372	sugar maple	Acer saccharum	9	Good	Retain		
373	American elm	Ulmus americana	9	Fair	Retain		
374	American sycamore	Platanus occidentalis	36	Fair	Retain		
375	shagbark hickory	Carya ovata	15	Fair	Retain		
376	shagbark hickory	Carya ovata	20	Good	Retain		
377	shagbark hickory	Carya ovata	18	Fair	Retain		
378	tuliptree	Liriodendron tulipifera	13	Good	Retain		
379	tuliptree	Liriodendron tulipifera	17	Fair	Retain		
380	Norway spruce	Picea abies	10	Good	Retain		
381	Norway spruce	Picea abies	8	Fair	Retain		
382	Norway spruce	Picea abies	11	Poor	Remove		
383	Norway spruce	Picea abies	13	Poor	Remove		
384	Norway spruce	Picea abies	11	Poor	Retain		
385	black walnut	Juglans nigra	17	Fair	Retain		
386	sugar maple	Acer saccharum	9	Good	Retain		
387	common hackberry	Celtis occidentalis	19	Poor	Remove		
388	American sycamore	Platanus occidentalis	20	Fair	Retain		
389	eastern cottonwood	Populus deltoides	23	Poor	Retain		
390	eastern cottonwood	Populus deltoides	26	Fair	Retain		
391	eastern cottonwood	Populus deltoides	20	Good	Retain		
392	chinquapin oak	Quercus muehlenbergii	9	Good	Retain		
393	American sycamore	Platanus occidentalis	36	Poor	Retain		
394	black walnut	Juglans nigra	21	Fair	Retain		
395	common hackberry	Celtis occidentalis	30	Poor	Remove		
396	chinquapin oak	Quercus muehlenbergii	26	Fair	Retain		
397	chinquapin oak	Quercus muehlenbergii	34	Fair	Retain	21 13	Yes
398	Norway spruce	Picea abies	9	Good	Retain		
399	shagbark hickory	Carya ovata	17	Good	Retain		
400	shagbark hickory	Carya ovata	9	Fair	Retain		
401	bitternut hickory	Carya cordiformis	17	Good	Retain		
402	white oak	Quercus alba	12	Good	Retain		
403	bitternut hickory	Carya cordiformis	28	Fair	Retain		
404	bitternut hickory	Carya cordiformis	15	Fair	Retain		
405	black cherry	Prunus serotina	8	Poor	Remove		
406	bitternut hickory	Carya cordiformis	11	Fair	Retain		
407	American beech	Fagus grandifolia	29	Good	Retain		
408	sugar maple	Acer saccharum	13	Poor	Remove		
409	sugar maple	Acer saccharum	8	Good	Retain		
410	white oak	Quercus alba	15	Good	Retain		
411	sugar maple	Acer saccharum	13	Poor	Retain		
412	chinquapin oak	Quercus muehlenbergii	19	Poor	Remove		
413	tuliptree	Liriodendron tulipifera	39	Poor	Remove		
414	eastern white pine	Pinus strobus	13	Fair	Retain		
415	bitternut hickory	Carya cordiformis	14	Fair	Retain		
416	eastern white pine	Pinus strobus	12	Fair	Retain		

Appendix A. Inventoried Trees Table

417	eastern white pine	<i>Pinus strobus</i>	16	Good	Retain		
418	tuliptree	<i>Liriodendron tulipifera</i>	35	Fair	Retain		
419	bitternut hickory	<i>Carya cordiformis</i>	18	Good	Retain		
420	black cherry	<i>Prunus serotina</i>	8	Fair	Retain		
421	tuliptree	<i>Liriodendron tulipifera</i>	11	Fair	Retain		
422	bitternut hickory	<i>Carya cordiformis</i>	28	Fair	Retain		
423	Norway spruce	<i>Picea abies</i>	11	Fair	Retain		
424	bitternut hickory	<i>Carya cordiformis</i>	15	Fair	Retain		
425	Norway spruce	<i>Picea abies</i>	13	Good	Retain		
426	tuliptree	<i>Liriodendron tulipifera</i>	15	Fair	Retain		
427	bitternut hickory	<i>Carya cordiformis</i>	20	Fair	Retain		
428	tuliptree	<i>Liriodendron tulipifera</i>	12	Fair	Retain		
429	sugar maple	<i>Acer saccharum</i>	16	Poor	Remove		
430	common hackberry	<i>Celtis occidentalis</i>	9	Fair	Retain		
431	bitternut hickory	<i>Carya cordiformis</i>	24	Good	Retain		
432	common hackberry	<i>Celtis occidentalis</i>	12	Fair	Retain		
433	slippery elm	<i>Ulmus rubra</i>	16	Fair	Retain		
434	sugar maple	<i>Acer saccharum</i>	11	Fair	Retain		
435	shagbark hickory	<i>Carya ovata</i>	14	Good	Retain		
436	chinquapin oak	<i>Quercus muehlenbergii</i>	12	Poor	Remove		
437	sugar maple	<i>Acer saccharum</i>	11	Poor	Retain		
438	black walnut	<i>Juglans nigra</i>	18	Fair	Retain		
439	bitternut hickory	<i>Carya cordiformis</i>	23	Good	Retain		
440	bitternut hickory	<i>Carya cordiformis</i>	16	Good	Retain		
441	white oak	<i>Quercus alba</i>	23	Fair	Retain		
442	bitternut hickory	<i>Carya cordiformis</i>	11	Fair	Retain		
443	bitternut hickory	<i>Carya cordiformis</i>	9	Fair	Retain		
444	American sycamore	<i>Platanus occidentalis</i>	18	Fair	Retain		
445	Norway spruce	<i>Picea abies</i>	14	Good	Retain		
446	tuliptree	<i>Liriodendron tulipifera</i>	18	Poor	Remove		
447	bitternut hickory	<i>Carya cordiformis</i>	17	Good	Retain		
448	bitternut hickory	<i>Carya cordiformis</i>	13	Good	Retain		
449	tuliptree	<i>Liriodendron tulipifera</i>	17	Poor	Remove		
450	tuliptree	<i>Liriodendron tulipifera</i>	13	Good	Retain		
451	tuliptree	<i>Liriodendron tulipifera</i>	35	Fair	Retain		
452	tuliptree	<i>Liriodendron tulipifera</i>	33	Good	Retain		
453	bitternut hickory	<i>Carya cordiformis</i>	23	Good	Retain		
454	bitternut hickory	<i>Carya cordiformis</i>	14	Fair	Retain		
455	chinquapin oak	<i>Quercus muehlenbergii</i>	15	Good	Retain		
456	black locust	<i>Robinia pseudoacacia</i>	14	Fair	Retain		
457	black cherry	<i>Prunus serotina</i>	10	Fair	Retain		
458	hophornbeam	<i>Ostrya virginiana</i>	12	Good	Retain		
459	American sycamore	<i>Platanus occidentalis</i>	22	Fair	Retain		
460	American beech	<i>Fagus grandifolia</i>	13	Good	Retain		
461	white oak	<i>Quercus alba</i>	22	Good	Retain		
462	common hackberry	<i>Celtis occidentalis</i>	18	Poor	Retain		
463	shagbark hickory	<i>Carya ovata</i>	11	Fair	Retain		
464	shagbark hickory	<i>Carya ovata</i>	11	Fair	Retain		
465	black walnut	<i>Juglans nigra</i>	20	Fair	Retain		
466	shagbark hickory	<i>Carya ovata</i>	11	Good	Retain		
467	black walnut	<i>Juglans nigra</i>	11	Fair	Retain		
468	black walnut	<i>Juglans nigra</i>	25	Poor	Retain		
469	tuliptree	<i>Liriodendron tulipifera</i>	9	Fair	Retain		
470	tuliptree	<i>Liriodendron tulipifera</i>	16	Good	Retain		
471	common hackberry	<i>Celtis occidentalis</i>	9	Poor	Remove		
472	black walnut	<i>Juglans nigra</i>	19	Good	Retain		
473	eastern cottonwood	<i>Populus deltoides</i>	9	Poor	Remove		
474	eastern cottonwood	<i>Populus deltoides</i>	19	Fair	Retain		
475	American sycamore	<i>Platanus occidentalis</i>	17	Fair	Retain		

Appendix A. Inventoried Trees Table

476	eastern cottonwood	Populus deltoides	17	Good	Retain		
477	common hackberry	Celtis occidentalis	8	Fair	Retain		
478	common hackberry	Celtis occidentalis	18	Poor	Remove	11 7	Yes
479	bitternut hickory	Carya cordiformis	11	Good	Retain		
480	American elm	Ulmus americana	11	Fair	Retain		
481	bitternut hickory	Carya cordiformis	9	Good	Retain		
482	bitternut hickory	Carya cordiformis	13	Good	Retain		
483	common hackberry	Celtis occidentalis	13	Poor	Retain		
484	eastern cottonwood	Populus deltoides	13	Good	Retain		
485	American sycamore	Platanus occidentalis	11	Fair	Retain		
486	American elm	Ulmus americana	10	Fair	Retain		
487	willow spp	Salix spp	17	Fair	Retain		
488	boxelder	Acer negundo	15	Poor	Remove		
489	common hackberry	Celtis occidentalis	13	Good	Retain		
490	common hackberry	Celtis occidentalis	11	Fair	Retain		
491	sugar maple	Acer saccharum	22	Fair	Retain		
492	common hackberry	Celtis occidentalis	9	Good	Retain		
493	boxelder	Acer negundo	9	Poor	Remove		
494	black walnut	Juglans nigra	34	Good	Retain		
495	sugar maple	Acer saccharum	11	Fair	Retain		
496	sugar maple	Acer saccharum	10	Fair	Retain		
497	common hackberry	Celtis occidentalis	13	Poor	Retain		
498	sugar maple	Acer saccharum	10	Fair	Retain		
499	tuliptree	Liriodendron tulipifera	25	Fair	Retain		
500	sugar maple	Acer saccharum	15	Fair	Retain		
501	sugar maple	Acer saccharum	10	Fair	Retain		
502	ash spp	Fraxinus spp	15	Fair	Remove		
503	black walnut	Juglans nigra	15	Fair	Retain		
504	slippery elm	Ulmus rubra	18	Poor	Remove		
505	sugar maple	Acer saccharum	12	Good	Retain		
506	sugar maple	Acer saccharum	15	Poor	Remove		
507	bitternut hickory	Carya cordiformis	19	Good	Retain		
508	sugar maple	Acer saccharum	10	Fair	Retain		
509	tuliptree	Liriodendron tulipifera	20	Fair	Retain		
510	tuliptree	Liriodendron tulipifera	10	Fair	Retain		
511	ash spp	Fraxinus spp	13	Dead	Remove		
512	common hackberry	Celtis occidentalis	9	Poor	Remove		
513	sugar maple	Acer saccharum	10	Good	Retain		
514	bitternut hickory	Carya cordiformis	23	Good	Retain		
515	bitternut hickory	Carya cordiformis	14	Fair	Retain		
516	bitternut hickory	Carya cordiformis	16	Fair	Retain		
517	bitternut hickory	Carya cordiformis	14	Good	Retain		
518	bitternut hickory	Carya cordiformis	11	Good	Retain		
519	tuliptree	Liriodendron tulipifera	19	Good	Retain		
520	black cherry	Prunus serotina	22	Fair	Retain		
521	black cherry	Prunus serotina	13	Poor	Retain		
522	bitternut hickory	Carya cordiformis	11	Fair	Retain		
523	black cherry	Prunus serotina	16	Poor	Retain		
524	black cherry	Prunus serotina	17	Fair	Retain		
525	tuliptree	Liriodendron tulipifera	35	Fair	Retain	17 18	Yes
526	black cherry	Prunus serotina	16	Fair	Retain		
527	tuliptree	Liriodendron tulipifera	24	Fair	Retain		
528	black cherry	Prunus serotina	14	Poor	Remove		
529	sugar maple	Acer saccharum	8	Good	Retain		
530	sugar maple	Acer saccharum	8	Good	Retain		
531	black cherry	Prunus serotina	17	Fair	Retain		
532	tuliptree	Liriodendron tulipifera	33	Fair	Retain	18 15	Yes
533	tuliptree	Liriodendron tulipifera	23	Good	Retain		
534	black cherry	Prunus serotina	15	Poor	Remove		

Appendix A. Inventoried Trees Table

535	sugar maple	Acer saccharum	9	Good	Retain		
536	tuliptree	Liriodendron tulipifera	20	Good	Retain		
537	tuliptree	Liriodendron tulipifera	20	Fair	Retain		
538	tuliptree	Liriodendron tulipifera	21	Fair	Retain		
539	bitternut hickory	Carya cordiformis	13	Good	Retain		
540	bitternut hickory	Carya cordiformis	9	Fair	Retain		
541	bitternut hickory	Carya cordiformis	10	Fair	Retain		
542	black walnut	Juglans nigra	11	Fair	Retain		
543	black walnut	Juglans nigra	15	Fair	Retain		
544	black walnut	Juglans nigra	12	Good	Retain		
545	tuliptree	Liriodendron tulipifera	31	Fair	Retain		
546	bitternut hickory	Carya cordiformis	26	Good	Retain		
547	sugar maple	Acer saccharum	24	Fair	Retain		
548	tuliptree	Liriodendron tulipifera	20	Good	Retain		
549	bitternut hickory	Carya cordiformis	28	Fair	Retain		
550	bitternut hickory	Carya cordiformis	23	Fair	Retain		
551	bur oak	Quercus macrocarpa	15	Good	Retain		
552	ash spp	Fraxinus spp	23	Dead	Remove		
553	white oak	Quercus alba	20	Good	Retain		
554	eastern cottonwood	Populus deltoides	39	Poor	Retain		
555	swamp white oak	Quercus bicolor	23	Fair	Retain		
556	Ohio buckeye	Aesculus glabra	9	Poor	Remove		
557	chinquapin oak	Quercus muehlenbergii	15	Fair	Retain		
558	common hackberry	Celtis occidentalis	15	Fair	Retain		
559	Ohio buckeye	Aesculus glabra	11	Fair	Retain		
560	American sycamore	Platanus occidentalis	30	Good	Retain		
561	honeylocust	Gleditsia triacanthos	16	Fair	Retain		
562	American basswood	Tilia americana	13	Fair	Retain		
563	common hackberry	Celtis occidentalis	48	Poor	Remove	15 16 17	Yes
564	common hackberry	Celtis occidentalis	18	Poor	Retain		
565	common hackberry	Celtis occidentalis	19	Fair	Retain		
566	sugar maple	Acer saccharum	14	Poor	Remove		
567	American beech	Fagus grandifolia	18	Good	Retain		
568	tuliptree	Liriodendron tulipifera	18	Good	Retain		
569	sugar maple	Acer saccharum	10	Good	Retain		
570	common hackberry	Celtis occidentalis	8	Poor	Remove		
571	black walnut	Juglans nigra	22	Good	Retain		
572	common hackberry	Celtis occidentalis	9	Fair	Retain		
573	sugar maple	Acer saccharum	11	Fair	Retain		
574	black walnut	Juglans nigra	28	Poor	Retain		
575	white oak	Quercus alba	14	Fair	Retain		
576	black cherry	Prunus serotina	9	Fair	Retain		
577	common hackberry	Celtis occidentalis	26	Poor	Remove		
578	common hackberry	Celtis occidentalis	19	Poor	Remove		
579	bitternut hickory	Carya cordiformis	11	Fair	Retain		
580	bitternut hickory	Carya cordiformis	15	Good	Retain		
581	bitternut hickory	Carya cordiformis	24	Good	Retain		
582	bitternut hickory	Carya cordiformis	18	Good	Retain		
583	bitternut hickory	Carya cordiformis	13	Fair	Retain		
584	swamp white oak	Quercus bicolor	13	Fair	Retain		
585	bitternut hickory	Carya cordiformis	16	Fair	Retain		
586	bitternut hickory	Carya cordiformis	21	Poor	Retain		
587	bitternut hickory	Carya cordiformis	24	Good	Retain		
588	sugar maple	Acer saccharum	11	Good	Retain		
589	black cherry	Prunus serotina	9	Poor	Retain		
590	black locust	Robinia pseudoacacia	9	Poor	Remove		
591	chinquapin oak	Quercus muehlenbergii	10	Fair	Retain		
592	bitternut hickory	Carya cordiformis	16	Fair	Retain		
593	tuliptree	Liriodendron tulipifera	26	Poor	Remove		

Appendix A. Inventoried Trees Table

594	white oak	Quercus alba	13	Good	Retain		
595	chinquapin oak	Quercus muehlenbergii	22	Fair	Retain		
596	white oak	Quercus alba	19	Poor	Remove		
597	tuliptree	Liriodendron tulipifera	9	Fair	Retain		
598	black locust	Robinia pseudoacacia	19	Poor	Remove		
599	bitternut hickory	Carya cordiformis	9	Good	Retain		
600	sugar maple	Acer saccharum	9	Good	Retain		
601	Ohio buckeye	Aesculus glabra	8	Poor	Retain		
602	black cherry	Prunus serotina	33	Poor	Remove		
603	white oak	Quercus alba	13	Good	Retain		
604	bitternut hickory	Carya cordiformis	20	Good	Retain		
605	bitternut hickory	Carya cordiformis	26	Good	Retain		
606	American elm	Ulmus americana	8	Good	Retain		
607	shagbark hickory	Carya ovata	13	Good	Retain		
608	common hackberry	Celtis occidentalis	9	Good	Retain		
609	American beech	Fagus grandifolia	17	Fair	Retain		
610	common hackberry	Celtis occidentalis	17	Poor	Remove		
611	American beech	Fagus grandifolia	24	Good	Retain		
612	sugar maple	Acer saccharum	9	Good	Retain		
613	common hackberry	Celtis occidentalis	26	Poor	Retain		
614	sugar maple	Acer saccharum	9	Good	Retain		
615	sugar maple	Acer saccharum	11	Good	Retain		
616	American beech	Fagus grandifolia	29	Poor	Remove		
617	American beech	Fagus grandifolia	23	Good	Retain		
618	sugar maple	Acer saccharum	26	Poor	Retain		
619	tuliptree	Liriodendron tulipifera	20	Poor	Remove		
620	tuliptree	Liriodendron tulipifera	32	Poor	Retain		
621	Ohio buckeye	Aesculus glabra	14	Fair	Retain		
622	bitternut hickory	Carya cordiformis	21	Good	Retain		
623	tuliptree	Liriodendron tulipifera	23	Fair	Retain		
624	tuliptree	Liriodendron tulipifera	29	Fair	Retain		
625	white oak	Quercus alba	17	Good	Retain		
626	tuliptree	Liriodendron tulipifera	53	Fair	Retain	28 25	Yes
627	slippery elm	Ulmus rubra	10	Fair	Retain		
628	black cherry	Prunus serotina	10	Good	Retain		
629	tuliptree	Liriodendron tulipifera	29	Poor	Retain		
630	tuliptree	Liriodendron tulipifera	35	Poor	Remove		
631	sugar maple	Acer saccharum	19	Fair	Retain		
632	bitternut hickory	Carya cordiformis	15	Fair	Retain		
633	northern red oak	Quercus rubra	30	Fair	Retain		
634	American beech	Fagus grandifolia	11	Poor	Remove		
635	tuliptree	Liriodendron tulipifera	39	Good	Retain		
636	American beech	Fagus grandifolia	15	Good	Retain		
637	tuliptree	Liriodendron tulipifera	37	Poor	Remove		
638	American beech	Fagus grandifolia	13	Fair	Retain		
639	American beech	Fagus grandifolia	23	Poor	Remove		
640	American beech	Fagus grandifolia	22	Fair	Retain	14 8	Yes
641	American beech	Fagus grandifolia	15	Fair	Retain		
642	sugar maple	Acer saccharum	13	Good	Retain		
643	chinquapin oak	Quercus muehlenbergii	39	Good	Retain		
644	white oak	Quercus alba	22	Fair	Retain		
645	bitternut hickory	Carya cordiformis	13	Good	Retain		
646	bitternut hickory	Carya cordiformis	9	Fair	Retain		
647	bitternut hickory	Carya cordiformis	25	Good	Retain		
648	bitternut hickory	Carya cordiformis	10	Good	Retain		
649	bitternut hickory	Carya cordiformis	29	Fair	Retain		
650	bitternut hickory	Carya cordiformis	16	Fair	Retain		
651	sugar maple	Acer saccharum	13	Fair	Retain		
652	American elm	Ulmus americana	15	Fair	Retain		

Appendix A. Inventoried Trees Table

653	American elm	Ulmus americana	10	Poor	Retain		
654	black cherry	Prunus serotina	18	Poor	Remove		
655	bitternut hickory	Carya cordiformis	17	Fair	Retain		
656	bitternut hickory	Carya cordiformis	13	Fair	Retain		
657	American beech	Fagus grandifolia	14	Poor	Remove		
658	sugar maple	Acer saccharum	10	Good	Retain		
659	black cherry	Prunus serotina	28	Dead	Remove		
660	common hackberry	Celtis occidentalis	11	Poor	Remove		
661	black cherry	Prunus serotina	24	Poor	Remove		
662	American beech	Fagus grandifolia	17	Poor	Remove		
663	American beech	Fagus grandifolia	19	Poor	Remove		
664	American beech	Fagus grandifolia	13	Dead	Remove		
665	American beech	Fagus grandifolia	25	Fair	Retain		
666	American beech	Fagus grandifolia	25	Fair	Retain		
667	sugar maple	Acer saccharum	16	Fair	Retain		
668	American beech	Fagus grandifolia	19	Good	Retain		
669	American beech	Fagus grandifolia	21	Fair	Retain		
670	American hornbeam	Carpinus caroliniana	8	Good	Retain		
671	American beech	Fagus grandifolia	29	Poor	Remove		
672	sugar maple	Acer saccharum	11	Good	Retain		
673	black cherry	Prunus serotina	8	Fair	Retain		
674	American beech	Fagus grandifolia	18	Fair	Retain		
675	sugar maple	Acer saccharum	13	Poor	Remove		
676	sugar maple	Acer saccharum	13	Poor	Remove		
677	sugar maple	Acer saccharum	14	Poor	Remove		
678	American elm	Ulmus americana	11	Poor	Remove		
679	chinquapin oak	Quercus muehlenbergii	12	Poor	Remove		
680	black cherry	Prunus serotina	14	Poor	Remove		
681	sugar maple	Acer saccharum	19	Fair	Retain		
682	sugar maple	Acer saccharum	16	Fair	Retain		
683	American beech	Fagus grandifolia	14	Fair	Retain		
684	sugar maple	Acer saccharum	15	Poor	Remove		
685	tuliptree	Liriodendron tulipifera	34	Poor	Remove		
686	bitternut hickory	Carya cordiformis	16	Good	Retain		
687	American beech	Fagus grandifolia	16	Fair	Retain		
688	American beech	Fagus grandifolia	9	Poor	Remove		
689	chinquapin oak	Quercus muehlenbergii	31	Good	Retain		
690	American elm	Ulmus americana	11	Fair	Retain		
691	tuliptree	Liriodendron tulipifera	28	Fair	Retain		
692	sugar maple	Acer saccharum	18	Poor	Remove		
693	American beech	Fagus grandifolia	26	Fair	Retain		
694	bitternut hickory	Carya cordiformis	15	Fair	Retain		
695	black walnut	Juglans nigra	17	Fair	Retain		
696	American beech	Fagus grandifolia	15	Poor	Remove		
697	American beech	Fagus grandifolia	15	Good	Retain		
698	eastern hemlock	Tsuga canadensis	14	Fair	Retain	77	Yes
699	sugar maple	Acer saccharum	24	Fair	Retain		
700	American beech	Fagus grandifolia	21	Fair	Retain		
701	American beech	Fagus grandifolia	29	Poor	Remove		
702	American beech	Fagus grandifolia	30	Poor	Remove		
703	sugar maple	Acer saccharum	24	Fair	Retain		
704	American beech	Fagus grandifolia	8	Poor	Remove		
705	sugar maple	Acer saccharum	17	Poor	Remove		
706	American beech	Fagus grandifolia	16	Poor	Remove		
707	sugar maple	Acer saccharum	13	Poor	Remove		
708	sugar maple	Acer saccharum	20	Poor	Remove		
709	chinquapin oak	Quercus muehlenbergii	15	Poor	Remove		
710	bitternut hickory	Carya cordiformis	31	Good	Retain		
711	American beech	Fagus grandifolia	17	Fair	Retain		

Appendix A. Inventoried Trees Table

712	American beech	<i>Fagus grandifolia</i>	17	Good	Retain		
713	American beech	<i>Fagus grandifolia</i>	21	Fair	Retain		
714	American beech	<i>Fagus grandifolia</i>	26	Fair	Retain		
715	American beech	<i>Fagus grandifolia</i>	25	Poor	Retain		
716	American beech	<i>Fagus grandifolia</i>	19	Fair	Retain		
717	sugar maple	<i>Acer saccharum</i>	16	Poor	Remove		
718	sugar maple	<i>Acer saccharum</i>	25	Poor	Retain		
719	sugar maple	<i>Acer saccharum</i>	23	Poor	Retain		
720	sugar maple	<i>Acer saccharum</i>	14	Fair	Retain		
721	sugar maple	<i>Acer saccharum</i>	19	Poor	Remove		
722	sugar maple	<i>Acer saccharum</i>	23	Fair	Retain		
723	sugar maple	<i>Acer saccharum</i>	14	Good	Retain		
724	sugar maple	<i>Acer saccharum</i>	22	Good	Retain		
725	eastern hemlock	<i>Tsuga canadensis</i>	14	Good	Retain		
726	swamp white oak	<i>Quercus bicolor</i>	24	Fair	Retain		
727	sugar maple	<i>Acer saccharum</i>	19	Fair	Retain		
728	sugar maple	<i>Acer saccharum</i>	15	Poor	Remove		
729	bitternut hickory	<i>Carya cordiformis</i>	18	Good	Retain		
730	common hackberry	<i>Celtis occidentalis</i>	13	Poor	Retain		
731	ash spp	<i>Fraxinus</i> spp	11	Poor	Remove		
732	chinquapin oak	<i>Quercus muehlenbergii</i>	23	Poor	Retain		
733	ash spp	<i>Fraxinus</i> spp	19	Fair	Remove		
734	sugar maple	<i>Acer saccharum</i>	13	Poor	Remove		
735	sugar maple	<i>Acer saccharum</i>	10	Poor	Retain		
736	sugar maple	<i>Acer saccharum</i>	9	Poor	Remove		
737	chinquapin oak	<i>Quercus muehlenbergii</i>	25	Good	Retain		
738	common hackberry	<i>Celtis occidentalis</i>	9	Poor	Remove		
739	sugar maple	<i>Acer saccharum</i>	8	Fair	Retain		
740	common hackberry	<i>Celtis occidentalis</i>	10	Poor	Remove		
741	sugar maple	<i>Acer saccharum</i>	9	Fair	Retain		
742	bitternut hickory	<i>Carya cordiformis</i>	27	Poor	Retain		
743	Ohio buckeye	<i>Aesculus glabra</i>	16	Fair	Retain		
744	sugar maple	<i>Acer saccharum</i>	25	Fair	Retain		
745	tuliptree	<i>Liriodendron tulipifera</i>	34	Good	Retain		
746	bitternut hickory	<i>Carya cordiformis</i>	31	Fair	Retain	12 19	Yes
747	common hackberry	<i>Celtis occidentalis</i>	28	Poor	Retain		
748	eastern redbud	<i>Cercis canadensis</i>	8	Poor	Retain		
749	northern catalpa	<i>Catalpa speciosa</i>	37	Poor	Remove		
750	northern catalpa	<i>Catalpa speciosa</i>	37	Poor	Retain		
751	black cherry	<i>Prunus serotina</i>	12	Poor	Remove		
752	sugar maple	<i>Acer saccharum</i>	11	Fair	Retain		
753	sugar maple	<i>Acer saccharum</i>	11	Fair	Retain		
754	bitternut hickory	<i>Carya cordiformis</i>	15	Good	Retain		
755	sugar maple	<i>Acer saccharum</i>	13	Fair	Retain		
756	sugar maple	<i>Acer saccharum</i>	8	Fair	Retain		
757	tuliptree	<i>Liriodendron tulipifera</i>	24	Fair	Retain		
758	sugar maple	<i>Acer saccharum</i>	13	Fair	Retain		
759	sugar maple	<i>Acer saccharum</i>	15	Poor	Retain		
760	sugar maple	<i>Acer saccharum</i>	13	Good	Retain		
761	ash spp	<i>Fraxinus</i> spp	25	Dead	Remove		
762	sugar maple	<i>Acer saccharum</i>	16	Good	Retain		
763	ash spp	<i>Fraxinus</i> spp	9	Fair	Remove		
764	sugar maple	<i>Acer saccharum</i>	33	Poor	Remove		
765	tuliptree	<i>Liriodendron tulipifera</i>	20	Good	Retain		
766	sugar maple	<i>Acer saccharum</i>	9	Good	Retain		
767	tuliptree	<i>Liriodendron tulipifera</i>	36	Good	Retain		
768	sugar maple	<i>Acer saccharum</i>	11	Good	Retain		
769	tuliptree	<i>Liriodendron tulipifera</i>	30	Fair	Retain		
770	sugar maple	<i>Acer saccharum</i>	11	Good	Retain		

Appendix A. Inventoried Trees Table

771	black walnut	Juglans nigra	49	Poor	Retain		
772	bitternut hickory	Carya cordiformis	34	Fair	Retain		
773	swamp white oak	Quercus bicolor	25	Fair	Retain		
774	common hackberry	Celtis occidentalis	9	Poor	Remove		
775	Ohio buckeye	Aesculus glabra	14	Fair	Retain		
776	common hackberry	Celtis occidentalis	12	Poor	Remove		
777	boxelder	Acer negundo	15	Poor	Remove	7 8	Yes
778	black cherry	Prunus serotina	30	Poor	Remove		
779	common hackberry	Celtis occidentalis	12	Fair	Retain		
780	Ohio buckeye	Aesculus glabra	11	Fair	Retain		
781	black locust	Robinia pseudoacacia	26	Poor	Remove	13 13	Yes
782	boxelder	Acer negundo	18	Poor	Remove		
783	American elm	Ulmus americana	14	Good	Retain		
784	common hackberry	Celtis occidentalis	15	Poor	Remove		
785	bitternut hickory	Carya cordiformis	24	Poor	Remove		
786	black cherry	Prunus serotina	14	Fair	Retain		
787	common hackberry	Celtis occidentalis	15	Poor	Remove		
788	sugar maple	Acer saccharum	12	Fair	Retain		
789	black cherry	Prunus serotina	11	Dead	Remove		
790	common hackberry	Celtis occidentalis	15	Fair	Retain		
791	common hackberry	Celtis occidentalis	8	Poor	Remove		
792	common hackberry	Celtis occidentalis	12	Fair	Retain		
793	black locust	Robinia pseudoacacia	13	Fair	Retain		
794	common hackberry	Celtis occidentalis	9	Good	Retain		
795	sugar maple	Acer saccharum	8	Fair	Retain		
796	common hackberry	Celtis occidentalis	8	Fair	Retain		
797	Kentucky coffeetree	Gymnocladus dioicus	19	Good	Retain		
798	black cherry	Prunus serotina	17	Fair	Retain		
799	Kentucky coffeetree	Gymnocladus dioicus	9	Dead	Remove		
800	black cherry	Prunus serotina	9	Poor	Retain		
801	Ohio buckeye	Aesculus glabra	9	Fair	Retain		
802	Kentucky coffeetree	Gymnocladus dioicus	9	Poor	Remove		
803	chinquapin oak	Quercus muehlenbergii	11	Fair	Retain		
804	boxelder	Acer negundo	10	Poor	Remove		
805	common hackberry	Celtis occidentalis	14	Poor	Remove		
806	common hackberry	Celtis occidentalis	46	Fair	Retain	23 23	Yes
807	black walnut	Juglans nigra	20	Fair	Retain		
808	sugar maple	Acer saccharum	9	Poor	Remove		
809	boxelder	Acer negundo	14	Poor	Retain		
810	sugar maple	Acer saccharum	11	Poor	Remove		
811	common hackberry	Celtis occidentalis	13	Poor	Remove		
812	common hackberry	Celtis occidentalis	13	Poor	Remove		
813	sugar maple	Acer saccharum	9	Good	Retain		
814	sugar maple	Acer saccharum	12	Poor	Remove		
815	ash spp	Fraxinus spp	9	Dead	Remove		
816	boxelder	Acer negundo	7	Dead	Remove		
817	Ohio buckeye	Aesculus glabra	7	Fair	Retain		
818	eastern redbud	Cercis canadensis	9	Poor	Retain		
819	Ohio buckeye	Aesculus glabra	13	Poor	Retain		
820	Ohio buckeye	Aesculus glabra	13	Poor	Remove		
821	sugar maple	Acer saccharum	7	Fair	Retain		
822	chinquapin oak	Quercus muehlenbergii	20	Fair	Retain		
823	sugar maple	Acer saccharum	9	Poor	Retain		
824	sugar maple	Acer saccharum	7	Fair	Retain		
825	Ohio buckeye	Aesculus glabra	15	Fair	Retain		
826	Ohio buckeye	Aesculus glabra	27	Poor	Retain	11 7 9	Yes
827	sugar maple	Acer saccharum	9	Fair	Retain		
828	tuliptree	Liriodendron tulipifera	24	Good	Retain		
829	common hackberry	Celtis occidentalis	7	Poor	Retain		

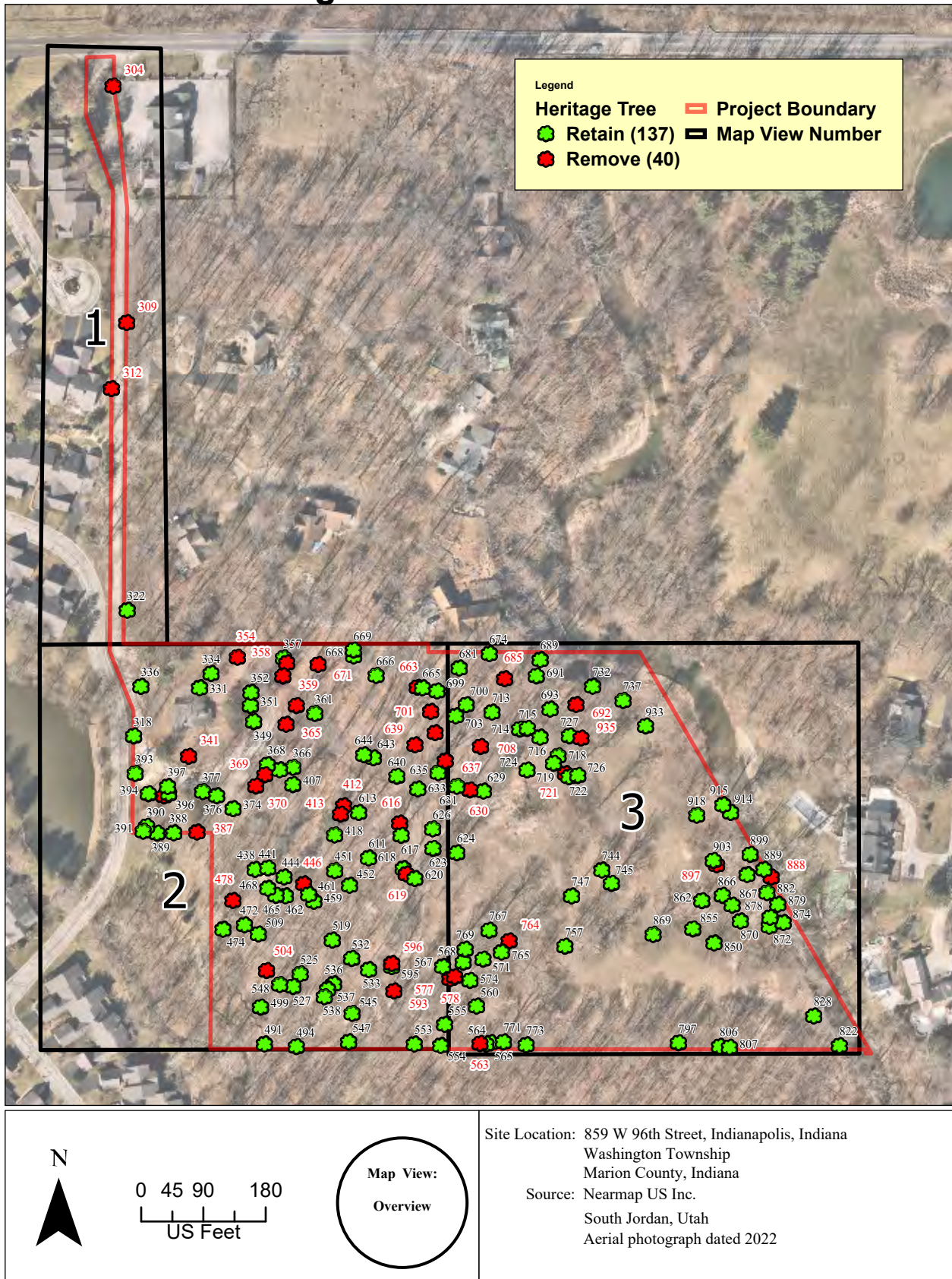
Appendix A. Inventoried Trees Table

830	American basswood	Tilia americana	12	Poor	Retain		
831	sugar maple	Acer saccharum	15	Poor	Retain		
832	sugar maple	Acer saccharum	7	Fair	Retain		
833	sugar maple	Acer saccharum	9	Fair	Retain		
834	American basswood	Tilia americana	33	Fair	Retain		
835	American basswood	Tilia americana	12	Fair	Retain		
836	American basswood	Tilia americana	20	Poor	Retain		
837	American basswood	Tilia americana	28	Fair	Retain		
838	American basswood	Tilia americana	9	Good	Retain		
839	American basswood	Tilia americana	70	Poor	Retain	42 28	Yes
840	American basswood	Tilia americana	10	Poor	Retain		
841	black cherry	Prunus serotina	12	Fair	Retain		
842	bitternut hickory	Carya cordiformis	19	Good	Retain		
843	common hackberry	Celtis occidentalis	9	Fair	Retain		
844	common hackberry	Celtis occidentalis	7	Poor	Remove		
845	common hackberry	Celtis occidentalis	6	Poor	Remove		
846	common hackberry	Celtis occidentalis	11	Poor	Remove	7 4	Yes
847	Ohio buckeye	Aesculus glabra	7	Fair	Retain		
848	Ohio buckeye	Aesculus glabra	7	Fair	Retain		
849	common hackberry	Celtis occidentalis	7	Poor	Retain		
850	common hackberry	Celtis occidentalis	45	Poor	Retain	21 24	Yes
851	American elm	Ulmus americana	15	Fair	Retain		
852	common hackberry	Celtis occidentalis	7	Poor	Remove		
853	common hackberry	Celtis occidentalis	10	Poor	Remove		
854	Ohio buckeye	Aesculus glabra	7	Fair	Retain		
855	common hackberry	Celtis occidentalis	19	Poor	Retain		
856	Ohio buckeye	Aesculus glabra	20	Fair	Retain	11 9	Yes
857	common hackberry	Celtis occidentalis	17	Poor	Remove		
858	boxelder	Acer negundo	13	Poor	Remove		
859	Ohio buckeye	Aesculus glabra	13	Fair	Retain	7 6	Yes
860	common hackberry	Celtis occidentalis	7	Poor	Remove		
861	Ohio buckeye	Aesculus glabra	7	Poor	Remove		
862	American sycamore	Platanus occidentalis	33	Poor	Retain		
863	sugar maple	Acer saccharum	7	Fair	Retain		
864	boxelder	Acer negundo	12	Poor	Retain		
865	American elm	Ulmus americana	7	Dead	Remove		
866	American sycamore	Platanus occidentalis	25	Fair	Retain		
867	American sycamore	Platanus occidentalis	32	Fair	Retain		
868	common hackberry	Celtis occidentalis	7	Fair	Retain		
869	black walnut	Juglans nigra	33	Fair	Retain		
870	American sycamore	Platanus occidentalis	20	Fair	Retain		
871	common hackberry	Celtis occidentalis	7	Fair	Retain		
872	American sycamore	Platanus occidentalis	25	Poor	Retain		
873	American elm	Ulmus americana	9	Poor	Remove		
874	American sycamore	Platanus occidentalis	33	Fair	Retain		
875	sugar maple	Acer saccharum	9	Fair	Retain		
876	sugar maple	Acer saccharum	9	Fair	Retain		
877	sugar maple	Acer saccharum	10	Fair	Retain		
878	American sycamore	Platanus occidentalis	23	Poor	Retain		
879	American sycamore	Platanus occidentalis	23	Poor	Retain		
880	sugar maple	Acer saccharum	7	Fair	Retain		
881	sugar maple	Acer saccharum	9	Fair	Retain		
882	eastern cottonwood	Populus deltoides	24	Fair	Retain		
883	sugar maple	Acer saccharum	9	Good	Retain		
884	American basswood	Tilia americana	7	Good	Retain		
885	black walnut	Juglans nigra	9	Fair	Retain		
886	eastern cottonwood	Populus deltoides	21	Fair	Retain		
887	boxelder	Acer negundo	12	Poor	Remove		
888	eastern cottonwood	Populus deltoides	24	Poor	Remove		

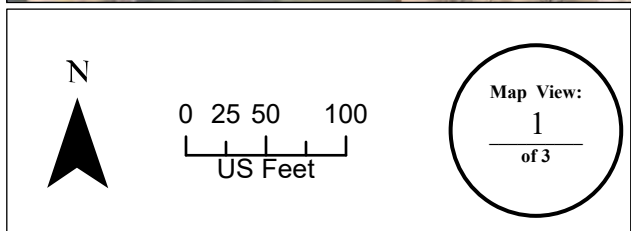
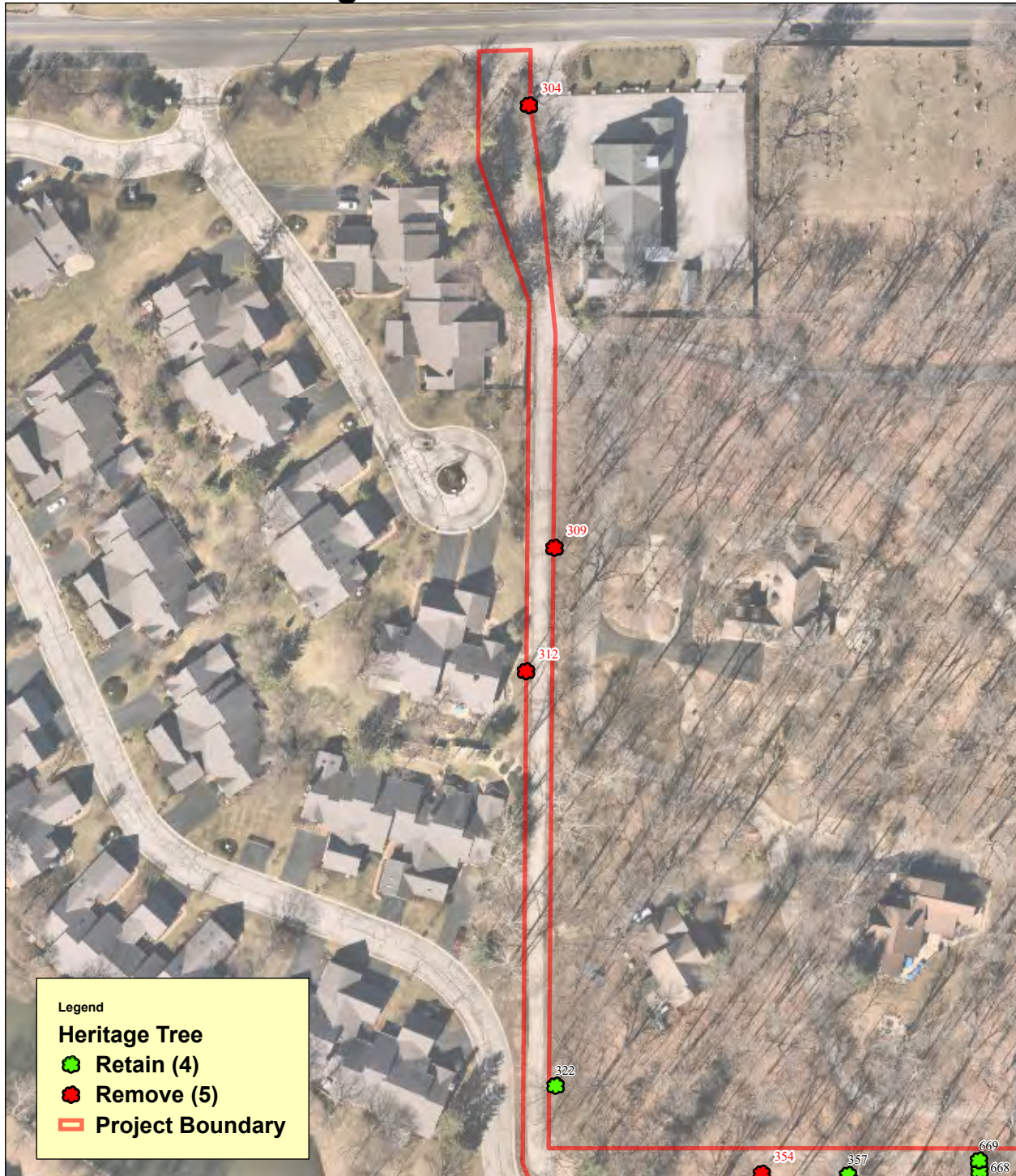
Appendix A. Inventoried Trees Table

889	eastern cottonwood	Populus deltoides	32	Poor	Retain		
890	boxelder	Acer negundo	7	Poor	Remove		
891	common hackberry	Celtis occidentalis	6	Fair	Retain		
892	common hackberry	Celtis occidentalis	13	Fair	Retain		
893	common hackberry	Celtis occidentalis	13	Fair	Retain		
894	common hackberry	Celtis occidentalis	6	Poor	Remove		
895	sugar maple	Acer saccharum	15	Poor	Remove		
896	Ohio buckeye	Aesculus glabra	11	Fair	Retain		
897	American sycamore	Platanus occidentalis	46	Poor	Remove		
898	eastern redbud	Cercis canadensis	7	Poor	Remove		
899	eastern cottonwood	Populus deltoides	24	Fair	Retain		
900	sugar maple	Acer saccharum	6	Poor	Retain		
901	black locust	Robinia pseudoacacia	17	Poor	Retain		
902	sugar maple	Acer saccharum	11	Fair	Retain		
903	American sycamore	Platanus occidentalis	59	Fair	Retain		
904	common hackberry	Celtis occidentalis	10	Poor	Remove		
905	Ohio buckeye	Aesculus glabra	7	Fair	Retain		
906	northern catalpa	Catalpa speciosa	9	Fair	Retain		
907	common hackberry	Celtis occidentalis	10	Poor	Remove		
908	common hackberry	Celtis occidentalis	10	Poor	Remove		
909	boxelder	Acer negundo	9	Dead	Remove		
910	common hackberry	Celtis occidentalis	10	Poor	Retain		
911	eastern redbud	Cercis canadensis	9	Poor	Remove		
912	boxelder	Acer negundo	8	Poor	Retain		
913	ash spp	Fraxinus spp	23	Poor	Remove		
914	eastern cottonwood	Populus deltoides	53	Poor	Retain	35 18	Yes
915	eastern cottonwood	Populus deltoides	32	Fair	Retain		
916	sugar maple	Acer saccharum	6	Fair	Retain		
917	boxelder	Acer negundo	9	Poor	Retain		
918	black walnut	Juglans nigra	23	Good	Retain		
919	sugar maple	Acer saccharum	7	Fair	Retain		
920	northern catalpa	Catalpa speciosa	19	Poor	Remove		
921	sugar maple	Acer saccharum	9	Fair	Retain		
922	sugar maple	Acer saccharum	7	Poor	Retain		
923	sugar maple	Acer saccharum	7	Poor	Retain		
924	boxelder	Acer negundo	9	Poor	Remove		
925	sugar maple	Acer saccharum	9	Poor	Retain		
926	blue ash	Fraxinus quadrangulata	9	Fair	Remove		
927	sugar maple	Acer saccharum	7	Poor	Remove		
928	sugar maple	Acer saccharum	11	Fair	Retain		
929	sugar maple	Acer saccharum	11	Fair	Retain		
930	sugar maple	Acer saccharum	11	Fair	Retain		
931	tree of heaven	Ailanthus altissima	6	Fair	Remove	Highly invasive	
932	sugar maple	Acer saccharum	11	Poor	Remove		
933	American sycamore	Platanus occidentalis	53	Good	Retain		
934	sugar maple	Acer saccharum	10	Fair	Retain		
935	sugar maple	Acer saccharum	18	Poor	Remove		

Appendix B Location of Heritage Trees with Recommendation

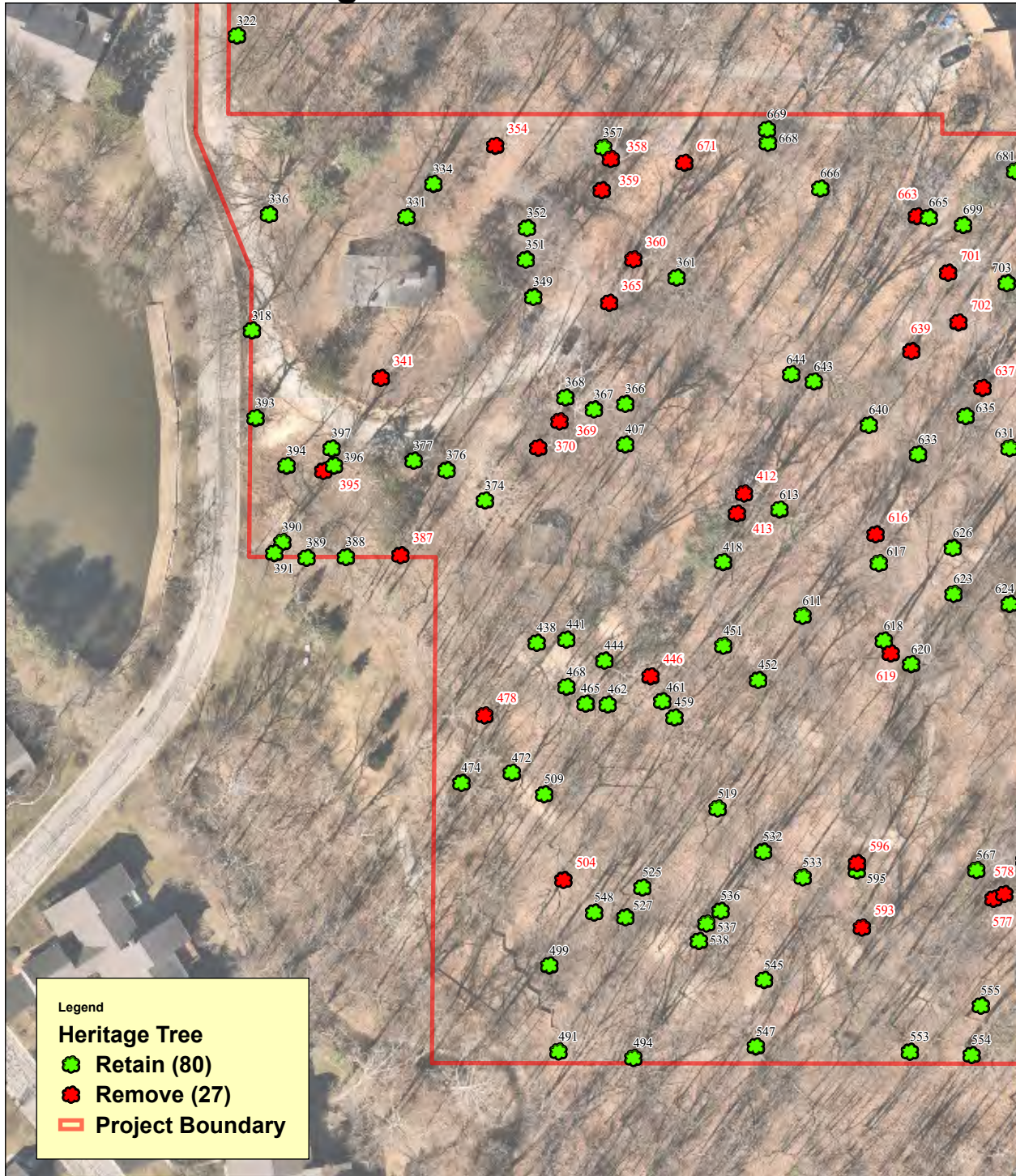


Appendix B Location of Heritage Trees with Recommendation



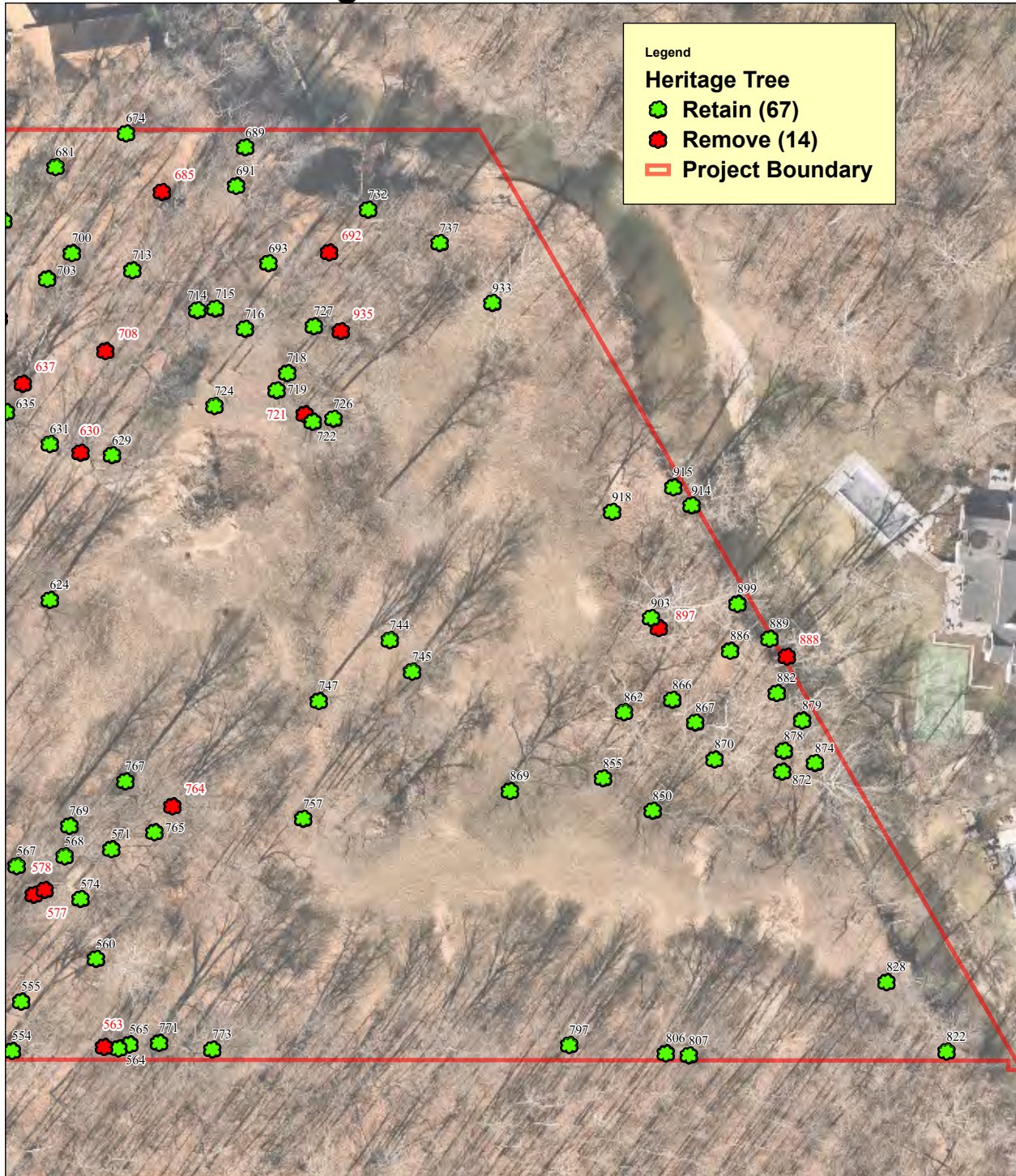
Site Location: 859 W 96th Street, Indianapolis, Indiana
Washington Township
Marion County, Indiana
Source: Nearmap US Inc.
South Jordan, Utah
Aerial photograph dated 2022

Appendix B Location of Heritage Trees with Recommendation



<p>N</p> <p>0 20 40 80 US Feet</p> <p>Map View: 2 of 3</p>	<p>Site Location: 859 W 96th Street, Indianapolis, Indiana Washington Township Marion County, Indiana</p> <p>Source: Nearmap US Inc. South Jordan, Utah Aerial photograph dated 2022</p>
--	--

Appendix B Location of Heritage Trees with Recommendation



<p>N</p> <p>0 20 40 80 US Feet</p> <p>Map View: 3 of 3</p>	<p>Site Location: 859 W 96th Street, Indianapolis, Indiana Washington Township Marion County, Indiana</p> <p>Source: Nearmap US Inc. South Jordan, Utah Aerial photograph dated 2022</p>
--	--

Appendix B. Heritage Trees with Recommendation Table

Tree ID	Common name	Botanical name	DBH	Condition	Recommendation	Notes	Multi-stem
304	common hackberry	<i>Celtis occidentalis</i>	24	Poor	Remove		
309	American elm	<i>Ulmus americana</i>	19	Poor	Remove		
312	black walnut	<i>Juglans nigra</i>	18	Poor	Remove		
318	white oak	<i>Quercus alba</i>	35	Fair	Retain		
322	chinquapin oak	<i>Quercus muehlenbergii</i>	20	Fair	Retain		
331	white oak	<i>Quercus alba</i>	28	Fair	Retain		
334	black walnut	<i>Juglans nigra</i>	22	Fair	Retain		
336	white oak	<i>Quercus alba</i>	42	Good	Retain		
341	sugar maple	<i>Acer saccharum</i>	22	Poor	Remove		
349	white oak	<i>Quercus alba</i>	31	Fair	Retain		
351	chinquapin oak	<i>Quercus muehlenbergii</i>	23	Good	Retain		
352	American beech	<i>Fagus grandifolia</i>	28	Poor	Retain		
354	common hackberry	<i>Celtis occidentalis</i>	30	Poor	Remove		
357	American beech	<i>Fagus grandifolia</i>	22	Poor	Retain		
358	American beech	<i>Fagus grandifolia</i>	25	Poor	Remove		
359	American beech	<i>Fagus grandifolia</i>	19	Poor	Remove		
360	American beech	<i>Fagus grandifolia</i>	29	Poor	Remove		
361	American beech	<i>Fagus grandifolia</i>	33	Poor	Retain		
365	American beech	<i>Fagus grandifolia</i>	34	Poor	Remove		
366	tuliptree	<i>Liriodendron tulipifera</i>	18	Fair	Retain		
367	American beech	<i>Fagus grandifolia</i>	20	Fair	Retain		
368	American sycamore	<i>Platanus occidentalis</i>	32	Good	Retain		
369	American beech	<i>Fagus grandifolia</i>	18	Poor	Remove		
370	American beech	<i>Fagus grandifolia</i>	29	Poor	Remove		
374	American sycamore	<i>Platanus occidentalis</i>	36	Fair	Retain		
376	shagbark hickory	<i>Carya ovata</i>	20	Good	Retain		
377	shagbark hickory	<i>Carya ovata</i>	18	Fair	Retain		
387	common hackberry	<i>Celtis occidentalis</i>	19	Poor	Remove		
388	American sycamore	<i>Platanus occidentalis</i>	20	Fair	Retain		
389	eastern cottonwood	<i>Populus deltoides</i>	23	Poor	Retain		
390	eastern cottonwood	<i>Populus deltoides</i>	26	Fair	Retain		
391	eastern cottonwood	<i>Populus deltoides</i>	20	Good	Retain		
393	American sycamore	<i>Platanus occidentalis</i>	36	Poor	Retain		
394	black walnut	<i>Juglans nigra</i>	21	Fair	Retain		
395	common hackberry	<i>Celtis occidentalis</i>	30	Poor	Remove		
396	chinquapin oak	<i>Quercus muehlenbergii</i>	26	Fair	Retain		
397	chinquapin oak	<i>Quercus muehlenbergii</i>	34	Fair	Retain	21 13	Yes
407	American beech	<i>Fagus grandifolia</i>	29	Good	Retain		
412	chinquapin oak	<i>Quercus muehlenbergii</i>	19	Poor	Remove		
413	tuliptree	<i>Liriodendron tulipifera</i>	39	Poor	Remove		
418	tuliptree	<i>Liriodendron tulipifera</i>	35	Fair	Retain		
438	black walnut	<i>Juglans nigra</i>	18	Fair	Retain		
441	white oak	<i>Quercus alba</i>	23	Fair	Retain		
444	American sycamore	<i>Platanus occidentalis</i>	18	Fair	Retain		
446	tuliptree	<i>Liriodendron tulipifera</i>	18	Poor	Remove		
451	tuliptree	<i>Liriodendron tulipifera</i>	35	Fair	Retain		
452	tuliptree	<i>Liriodendron tulipifera</i>	33	Good	Retain		
459	American sycamore	<i>Platanus occidentalis</i>	22	Fair	Retain		
461	white oak	<i>Quercus alba</i>	22	Good	Retain		
462	common hackberry	<i>Celtis occidentalis</i>	18	Poor	Retain		
465	black walnut	<i>Juglans nigra</i>	20	Fair	Retain		
468	black walnut	<i>Juglans nigra</i>	25	Poor	Retain		
472	black walnut	<i>Juglans nigra</i>	19	Good	Retain		
474	eastern cottonwood	<i>Populus deltoides</i>	19	Fair	Retain		
478	common hackberry	<i>Celtis occidentalis</i>	18	Poor	Remove	11 7	Yes
491	sugar maple	<i>Acer saccharum</i>	22	Fair	Retain		
494	black walnut	<i>Juglans nigra</i>	34	Good	Retain		
499	tuliptree	<i>Liriodendron tulipifera</i>	25	Fair	Retain		
504	slippery elm	<i>Ulmus rubra</i>	18	Poor	Remove		

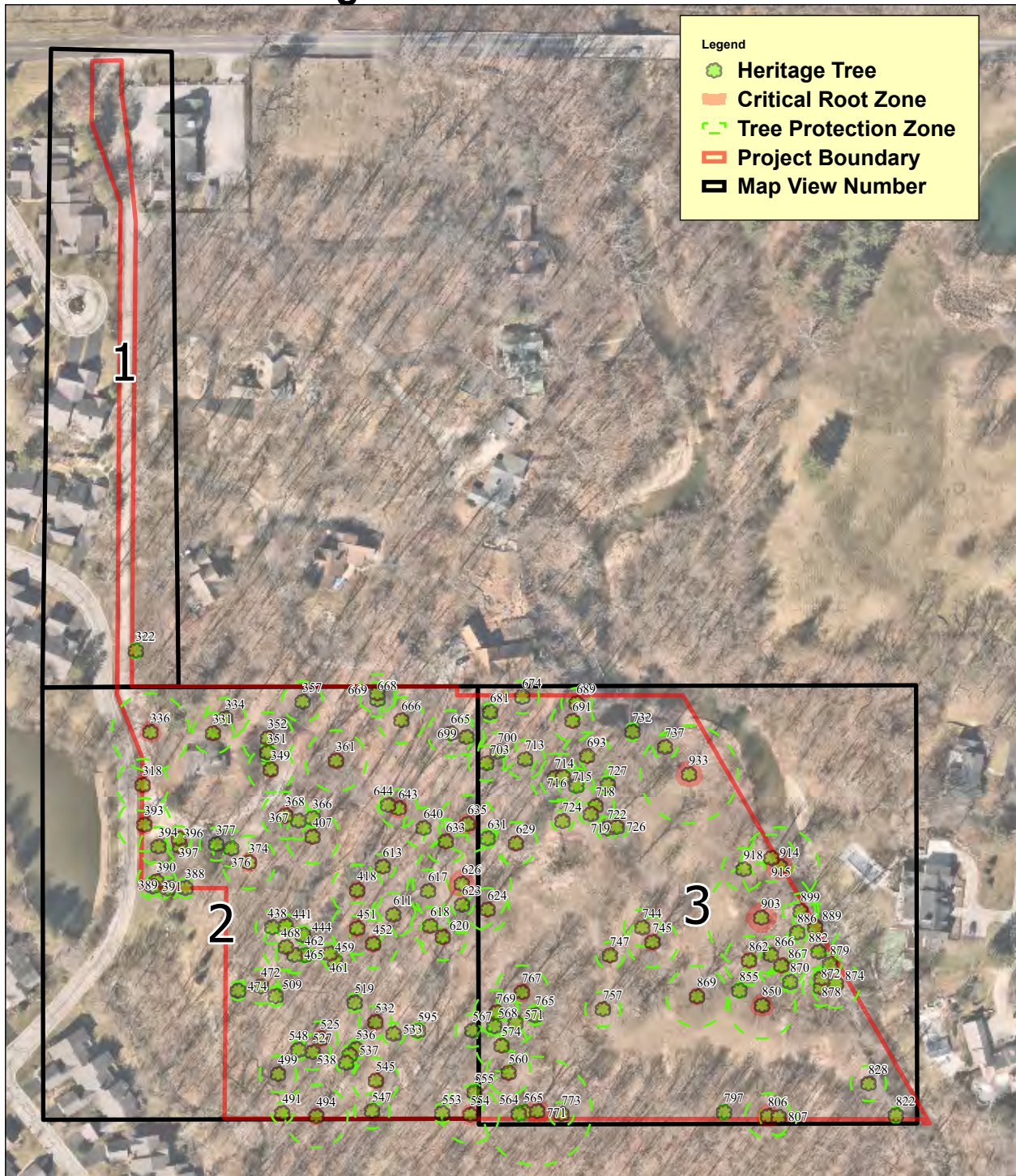
Appendix B. Heritage Trees with Recommendation Table

509	tuliptree	Liriodendron tulipifera	20	Fair	Retain		
519	tuliptree	Liriodendron tulipifera	19	Good	Retain		
525	tuliptree	Liriodendron tulipifera	35	Fair	Retain	17 18	Yes
527	tuliptree	Liriodendron tulipifera	24	Fair	Retain		
532	tuliptree	Liriodendron tulipifera	33	Fair	Retain	18 15	Yes
533	tuliptree	Liriodendron tulipifera	23	Good	Retain		
536	tuliptree	Liriodendron tulipifera	20	Good	Retain		
537	tuliptree	Liriodendron tulipifera	20	Fair	Retain		
538	tuliptree	Liriodendron tulipifera	21	Fair	Retain		
545	tuliptree	Liriodendron tulipifera	31	Fair	Retain		
547	sugar maple	Acer saccharum	24	Fair	Retain		
548	tuliptree	Liriodendron tulipifera	20	Good	Retain		
553	white oak	Quercus alba	20	Good	Retain		
554	eastern cottonwood	Populus deltoides	39	Poor	Retain		
555	swamp white oak	Quercus bicolor	23	Fair	Retain		
560	American sycamore	Platanus occidentalis	30	Good	Retain		
563	common hackberry	Celtis occidentalis	48	Poor	Remove	15 16 17	Yes
564	common hackberry	Celtis occidentalis	18	Poor	Retain		
565	common hackberry	Celtis occidentalis	19	Fair	Retain		
567	American beech	Fagus grandifolia	18	Good	Retain		
568	tuliptree	Liriodendron tulipifera	18	Good	Retain		
571	black walnut	Juglans nigra	22	Good	Retain		
574	black walnut	Juglans nigra	28	Poor	Retain		
577	common hackberry	Celtis occidentalis	26	Poor	Remove		
578	common hackberry	Celtis occidentalis	19	Poor	Remove		
593	tuliptree	Liriodendron tulipifera	26	Poor	Remove		
595	chinquapin oak	Quercus muehlenbergii	22	Fair	Retain		
596	white oak	Quercus alba	19	Poor	Remove		
611	American beech	Fagus grandifolia	24	Good	Retain		
613	common hackberry	Celtis occidentalis	26	Poor	Retain		
616	American beech	Fagus grandifolia	29	Poor	Remove		
617	American beech	Fagus grandifolia	23	Good	Retain		
618	sugar maple	Acer saccharum	26	Poor	Retain		
619	tuliptree	Liriodendron tulipifera	20	Poor	Remove		
620	tuliptree	Liriodendron tulipifera	32	Poor	Retain		
623	tuliptree	Liriodendron tulipifera	23	Fair	Retain		
624	tuliptree	Liriodendron tulipifera	29	Fair	Retain		
626	tuliptree	Liriodendron tulipifera	53	Fair	Retain	28 25	Yes
629	tuliptree	Liriodendron tulipifera	29	Poor	Retain		
630	tuliptree	Liriodendron tulipifera	35	Poor	Remove		
631	sugar maple	Acer saccharum	19	Fair	Retain		
633	northern red oak	Quercus rubra	30	Fair	Retain		
635	tuliptree	Liriodendron tulipifera	39	Good	Retain		
637	tuliptree	Liriodendron tulipifera	37	Poor	Remove		
639	American beech	Fagus grandifolia	23	Poor	Remove		
640	American beech	Fagus grandifolia	22	Fair	Retain	14 8	Yes
643	chinquapin oak	Quercus muehlenbergii	39	Good	Retain		
644	white oak	Quercus alba	22	Fair	Retain		
663	American beech	Fagus grandifolia	19	Poor	Remove		
665	American beech	Fagus grandifolia	25	Fair	Retain		
666	American beech	Fagus grandifolia	25	Fair	Retain		
668	American beech	Fagus grandifolia	19	Good	Retain		
669	American beech	Fagus grandifolia	21	Fair	Retain		
671	American beech	Fagus grandifolia	29	Poor	Remove		
674	American beech	Fagus grandifolia	18	Fair	Retain		
681	sugar maple	Acer saccharum	19	Fair	Retain		
685	tuliptree	Liriodendron tulipifera	34	Poor	Remove		
689	chinquapin oak	Quercus muehlenbergii	31	Good	Retain		
691	tuliptree	Liriodendron tulipifera	28	Fair	Retain		
692	sugar maple	Acer saccharum	18	Poor	Remove		

Appendix B. Heritage Trees with Recommendation Table

693	American beech	Fagus grandifolia	26	Fair	Retain		
699	sugar maple	Acer saccharum	24	Fair	Retain		
700	American beech	Fagus grandifolia	21	Fair	Retain		
701	American beech	Fagus grandifolia	29	Poor	Remove		
702	American beech	Fagus grandifolia	30	Poor	Remove		
703	sugar maple	Acer saccharum	24	Fair	Retain		
708	sugar maple	Acer saccharum	20	Poor	Remove		
713	American beech	Fagus grandifolia	21	Fair	Retain		
714	American beech	Fagus grandifolia	26	Fair	Retain		
715	American beech	Fagus grandifolia	25	Poor	Retain		
716	American beech	Fagus grandifolia	19	Fair	Retain		
718	sugar maple	Acer saccharum	25	Poor	Retain		
719	sugar maple	Acer saccharum	23	Poor	Retain		
721	sugar maple	Acer saccharum	19	Poor	Remove		
722	sugar maple	Acer saccharum	23	Fair	Retain		
724	sugar maple	Acer saccharum	22	Good	Retain		
726	swamp white oak	Quercus bicolor	24	Fair	Retain		
727	sugar maple	Acer saccharum	19	Fair	Retain		
732	chinquapin oak	Quercus muehlenbergii	23	Poor	Retain		
737	chinquapin oak	Quercus muehlenbergii	25	Good	Retain		
744	sugar maple	Acer saccharum	25	Fair	Retain		
745	tuliptree	Liriodendron tulipifera	34	Good	Retain		
747	common hackberry	Celtis occidentalis	28	Poor	Retain		
757	tuliptree	Liriodendron tulipifera	24	Fair	Retain		
764	sugar maple	Acer saccharum	33	Poor	Remove		
765	tuliptree	Liriodendron tulipifera	20	Good	Retain		
767	tuliptree	Liriodendron tulipifera	36	Good	Retain		
769	tuliptree	Liriodendron tulipifera	30	Fair	Retain		
771	black walnut	Juglans nigra	49	Poor	Retain		
773	swamp white oak	Quercus bicolor	25	Fair	Retain		
797	Kentucky coffeetree	Gymnocladus dioicus	19	Good	Retain		
806	common hackberry	Celtis occidentalis	46	Fair	Retain	23 23	Yes
807	black walnut	Juglans nigra	20	Fair	Retain		
822	chinquapin oak	Quercus muehlenbergii	20	Fair	Retain		
828	tuliptree	Liriodendron tulipifera	24	Good	Retain		
850	common hackberry	Celtis occidentalis	45	Poor	Retain	21 24	Yes
855	common hackberry	Celtis occidentalis	19	Poor	Retain		
862	American sycamore	Platanus occidentalis	33	Poor	Retain		
866	American sycamore	Platanus occidentalis	25	Fair	Retain		
867	American sycamore	Platanus occidentalis	32	Fair	Retain		
869	black walnut	Juglans nigra	33	Fair	Retain		
870	American sycamore	Platanus occidentalis	20	Fair	Retain		
872	American sycamore	Platanus occidentalis	25	Poor	Retain		
874	American sycamore	Platanus occidentalis	33	Fair	Retain		
878	American sycamore	Platanus occidentalis	23	Poor	Retain		
879	American sycamore	Platanus occidentalis	23	Poor	Retain		
882	eastern cottonwood	Populus deltoides	24	Fair	Retain		
886	eastern cottonwood	Populus deltoides	21	Fair	Retain		
888	eastern cottonwood	Populus deltoides	24	Poor	Remove		
889	eastern cottonwood	Populus deltoides	32	Poor	Retain		
897	American sycamore	Platanus occidentalis	46	Poor	Remove		
899	eastern cottonwood	Populus deltoides	24	Fair	Retain		
903	American sycamore	Platanus occidentalis	59	Fair	Retain		
914	eastern cottonwood	Populus deltoides	53	Poor	Retain	35 18	Yes
915	eastern cottonwood	Populus deltoides	32	Fair	Retain		
918	black walnut	Juglans nigra	23	Good	Retain		
933	American sycamore	Platanus occidentalis	53	Good	Retain		
935	sugar maple	Acer saccharum	18	Poor	Remove		

Appendix C Location of Heritage Trees with Tree Protection Zones

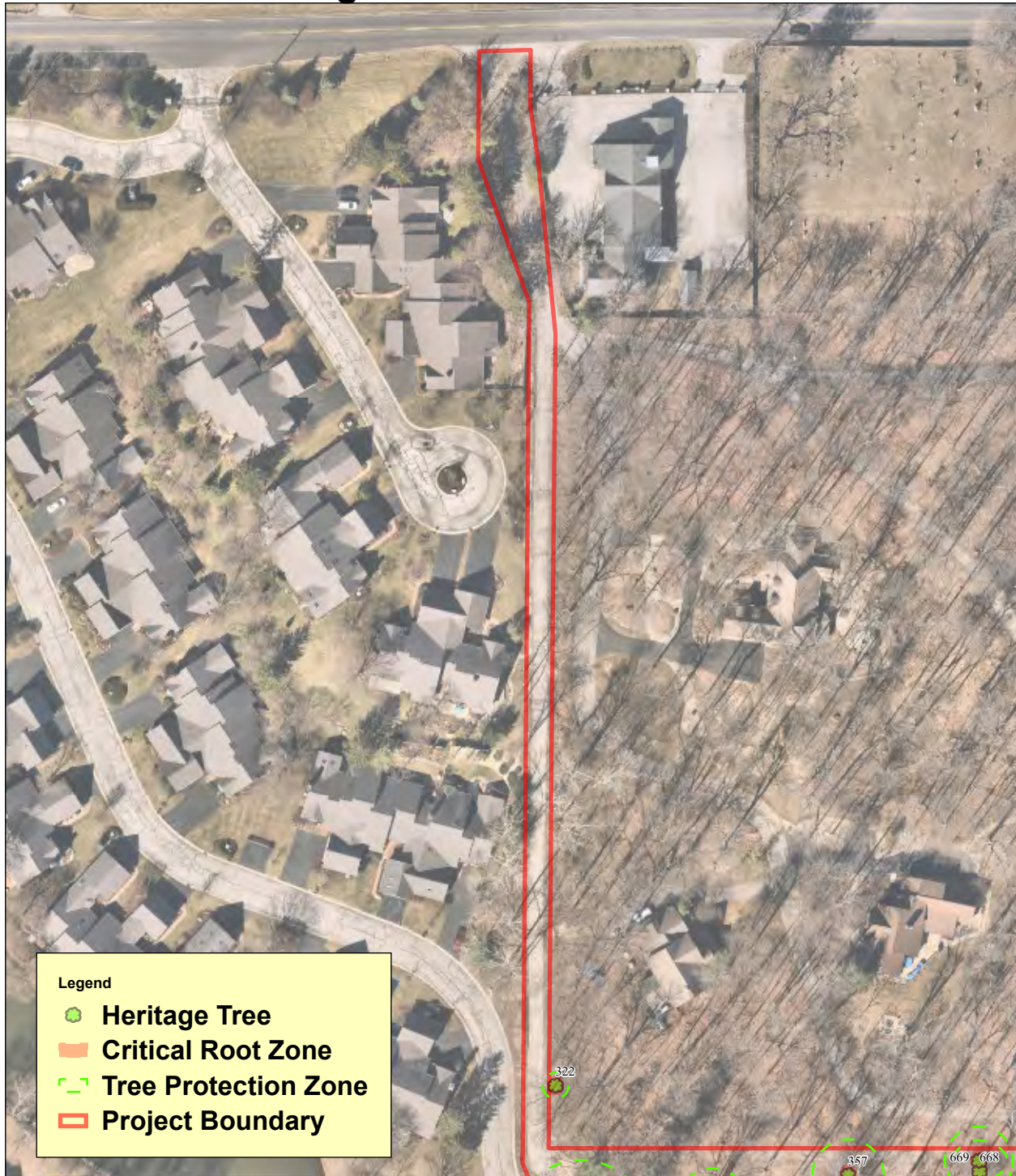


Legend

- Heritage Tree
- Critical Root Zone
- Tree Protection Zone
- Project Boundary
- Map View Number

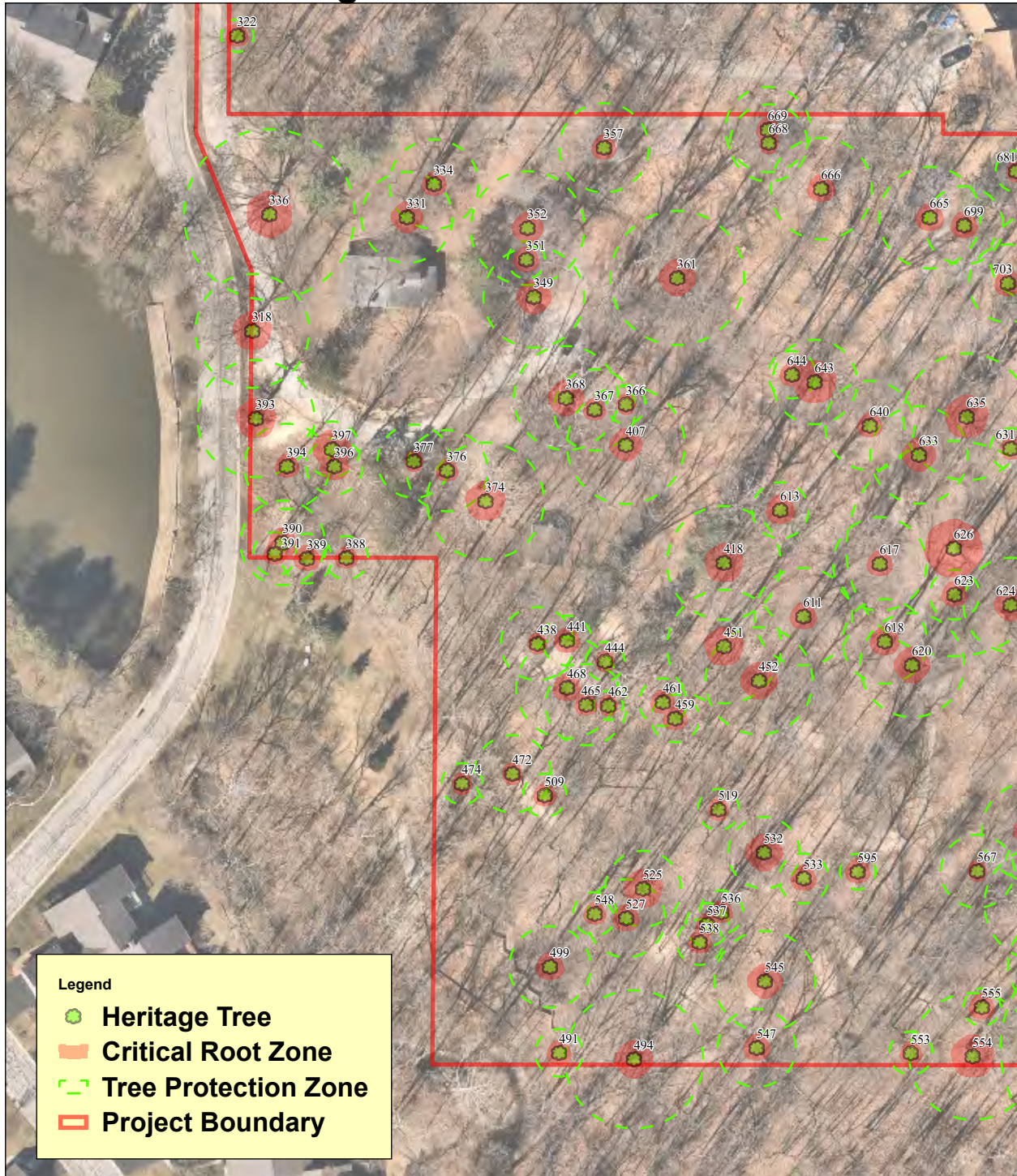
<p>N</p> <p>0 45 90 180 US Feet</p> <p>Map View: Overview</p>	<p>Site Location: 859 W 96th Street, Indianapolis, Indiana Washington Township Marion County, Indiana</p> <p>Source: Nearmap US Inc. South Jordan, Utah Aerial photograph dated 2022</p>
---	--

Appendix C Location of Heritage Trees with Tree Protection Zones







<p>N</p> <p>0 25 50 100 US Feet</p> <p>Map View: 1 of 3</p>	<p>Site Location: 859 W 96th Street, Indianapolis, Indiana Washington Township Marion County, Indiana</p> <p>Source: Nearmap US Inc. South Jordan, Utah Aerial photograph dated 2022</p>
---	--


Appendix C Location of Heritage Trees with Tree Protection Zones



Legend

-  Heritage Tree
-  Critical Root Zone
-  Tree Protection Zone
-  Project Boundary

N

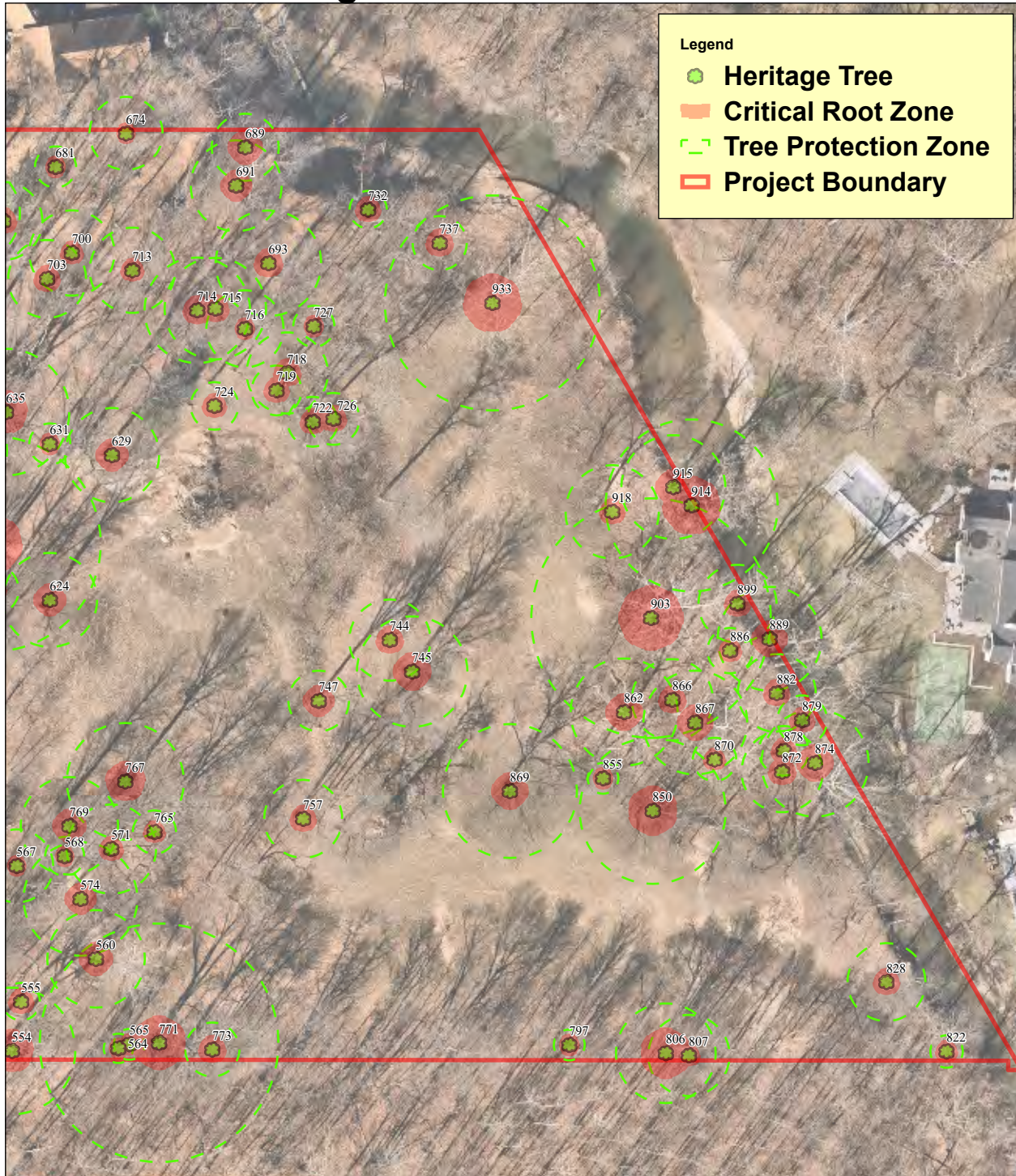


0 20 40 80
US Feet

Map View:
2
of 3

Site Location: 859 W 96th Street, Indianapolis, Indiana
Washington Township
Marion County, Indiana
Source: Nearmap US Inc.
South Jordan, Utah
Aerial photograph dated 2022

Appendix C Location of Heritage Trees with Tree Protection Zones



<p>N</p> <p>0 20 40 80 US Feet</p> <p>Map View: 3 of 3</p>	<p>Site Location: 859 W 96th Street, Indianapolis, Indiana Washington Township Marion County, Indiana</p> <p>Source: Nearmap US Inc. South Jordan, Utah Aerial photograph dated 2022</p>
--	--

Appendix C. Heritage Trees with Tree Protection Zones Table

Tree ID	Common name	Botanical name	DBH	Condition	Recommendation	Notes	Multi-stem	TPZ (ft)	CRZ (ft)
318	white oak	Quercus alba	35	Fair	Retain			35.00	11.67
322	chinquapin oak	Quercus muehlenbergii	20	Fair	Retain			10.00	6.67
331	white oak	Quercus alba	28	Fair	Retain			28.00	9.33
334	black walnut	Juglans nigra	22	Fair	Retain			27.50	7.33
336	white oak	Quercus alba	42	Good	Retain			52.50	14.00
349	white oak	Quercus alba	31	Fair	Retain			31.00	10.33
351	chinquapin oak	Quercus muehlenbergii	23	Good	Retain			11.50	7.67
352	American beech	Fagus grandifolia	28	Poor	Retain			35.00	9.33
357	American beech	Fagus grandifolia	22	Poor	Retain			27.50	7.33
361	American beech	Fagus grandifolia	33	Poor	Retain			41.25	11.00
366	tuliptree	Liriodendron tulipifera	18	Fair	Retain			12.00	6.00
367	American beech	Fagus grandifolia	20	Fair	Retain			25.00	6.67
368	American sycamore	Platanus occidentalis	32	Good	Retain			32.00	10.67
374	American sycamore	Platanus occidentalis	36	Fair	Retain			36.00	12.00
376	shagbark hickory	Carya ovata	20	Good	Retain			25.00	6.67
377	shagbark hickory	Carya ovata	18	Fair	Retain			22.50	6.00
388	American sycamore	Platanus occidentalis	20	Fair	Retain			13.33	6.67
389	eastern cottonwood	Populus deltoides	23	Poor	Retain			15.33	7.67
390	eastern cottonwood	Populus deltoides	26	Fair	Retain			26.00	8.67
391	eastern cottonwood	Populus deltoides	20	Good	Retain			13.33	6.67
393	American sycamore	Platanus occidentalis	36	Poor	Retain			36.00	12.00
394	black walnut	Juglans nigra	21	Fair	Retain			26.25	7.00
396	chinquapin oak	Quercus muehlenbergii	26	Fair	Retain			17.33	8.67
397	chinquapin oak	Quercus muehlenbergii	34	Fair	Retain	21 13	Yes	17.00	11.33
407	American beech	Fagus grandifolia	29	Good	Retain			36.25	9.67
418	tuliptree	Liriodendron tulipifera	35	Fair	Retain			35.00	11.67
438	black walnut	Juglans nigra	18	Fair	Retain			22.50	6.00
441	white oak	Quercus alba	23	Fair	Retain			15.33	7.67
444	American sycamore	Platanus occidentalis	18	Fair	Retain			12.00	6.00
451	tuliptree	Liriodendron tulipifera	35	Fair	Retain			35.00	11.67
452	tuliptree	Liriodendron tulipifera	33	Good	Retain			33.00	11.00
459	American sycamore	Platanus occidentalis	22	Fair	Retain			14.67	7.33
461	white oak	Quercus alba	22	Good	Retain			14.67	7.33
462	common hackberry	Celtis occidentalis	18	Poor	Retain			9.00	6.00
465	black walnut	Juglans nigra	20	Fair	Retain			25.00	6.67
468	black walnut	Juglans nigra	25	Poor	Retain			31.25	8.33
472	black walnut	Juglans nigra	19	Good	Retain			23.75	6.33
474	eastern cottonwood	Populus deltoides	19	Fair	Retain			12.67	6.33
491	sugar maple	Acer saccharum	22	Fair	Retain			14.67	7.33
494	black walnut	Juglans nigra	34	Good	Retain			42.50	11.33
499	tuliptree	Liriodendron tulipifera	25	Fair	Retain			25.00	8.33
509	tuliptree	Liriodendron tulipifera	20	Fair	Retain			13.33	6.67
519	tuliptree	Liriodendron tulipifera	19	Good	Retain			12.67	6.33
525	tuliptree	Liriodendron tulipifera	35	Fair	Retain	17 18	Yes	23.33	11.67
527	tuliptree	Liriodendron tulipifera	24	Fair	Retain			24.00	8.00
532	tuliptree	Liriodendron tulipifera	33	Fair	Retain	18 15	Yes	22.00	11.00
533	tuliptree	Liriodendron tulipifera	23	Good	Retain			15.33	7.67
536	tuliptree	Liriodendron tulipifera	20	Good	Retain			13.33	6.67
537	tuliptree	Liriodendron tulipifera	20	Fair	Retain			13.33	6.67
538	tuliptree	Liriodendron tulipifera	21	Fair	Retain			14.00	7.00
545	tuliptree	Liriodendron tulipifera	31	Fair	Retain			31.00	10.33
547	sugar maple	Acer saccharum	24	Fair	Retain			24.00	8.00
548	tuliptree	Liriodendron tulipifera	20	Good	Retain			13.33	6.67
553	white oak	Quercus alba	20	Good	Retain			13.33	6.67
554	eastern cottonwood	Populus deltoides	39	Poor	Retain			39.00	13.00
555	swamp white oak	Quercus bicolor	23	Fair	Retain			11.50	7.67
560	American sycamore	Platanus occidentalis	30	Good	Retain			30.00	10.00
564	common hackberry	Celtis occidentalis	18	Poor	Retain			9.00	6.00
565	common hackberry	Celtis occidentalis	19	Fair	Retain			9.50	6.33

Appendix C. Heritage Trees with Tree Protection Zones Table

567	American beech	Fagus grandifolia	18	Good	Retain			22.50	6.00
568	tuliptree	Liriodendron tulipifera	18	Good	Retain			12.00	6.00
571	black walnut	Juglans nigra	22	Good	Retain			27.50	7.33
574	black walnut	Juglans nigra	28	Poor	Retain			35.00	9.33
595	chinquapin oak	Quercus muehlenbergii	22	Fair	Retain			11.00	7.33
611	American beech	Fagus grandifolia	24	Good	Retain			30.00	8.00
613	common hackberry	Celtis occidentalis	26	Poor	Retain			17.33	8.67
617	American beech	Fagus grandifolia	23	Good	Retain			28.75	7.67
618	sugar maple	Acer saccharum	26	Poor	Retain			26.00	8.67
620	tuliptree	Liriodendron tulipifera	32	Poor	Retain			32.00	10.67
623	tuliptree	Liriodendron tulipifera	23	Fair	Retain			15.33	7.67
624	tuliptree	Liriodendron tulipifera	29	Fair	Retain			29.00	9.67
626	tuliptree	Liriodendron tulipifera	53	Fair	Retain	28 25	Yes	66.25	17.67
629	tuliptree	Liriodendron tulipifera	29	Poor	Retain			29.00	9.67
631	sugar maple	Acer saccharum	19	Fair	Retain			12.67	6.33
633	northern red oak	Quercus rubra	30	Fair	Retain			30.00	10.00
635	tuliptree	Liriodendron tulipifera	39	Good	Retain			39.00	13.00
640	American beech	Fagus grandifolia	22	Fair	Retain	14 8	Yes	27.50	7.33
643	chinquapin oak	Quercus muehlenbergii	39	Good	Retain			26.00	13.00
644	white oak	Quercus alba	22	Fair	Retain			14.67	7.33
665	American beech	Fagus grandifolia	25	Fair	Retain			31.25	8.33
666	American beech	Fagus grandifolia	25	Fair	Retain			31.25	8.33
668	American beech	Fagus grandifolia	19	Good	Retain			23.75	6.33
669	American beech	Fagus grandifolia	21	Fair	Retain			26.25	7.00
674	American beech	Fagus grandifolia	18	Fair	Retain			22.50	6.00
681	sugar maple	Acer saccharum	19	Fair	Retain			12.67	6.33
689	chinquapin oak	Quercus muehlenbergii	31	Good	Retain			20.67	10.33
691	tuliptree	Liriodendron tulipifera	28	Fair	Retain			28.00	9.33
693	American beech	Fagus grandifolia	26	Fair	Retain			32.50	8.67
699	sugar maple	Acer saccharum	24	Fair	Retain			24.00	8.00
700	American beech	Fagus grandifolia	21	Fair	Retain			26.25	7.00
703	sugar maple	Acer saccharum	24	Fair	Retain			24.00	8.00
713	American beech	Fagus grandifolia	21	Fair	Retain			26.25	7.00
714	American beech	Fagus grandifolia	26	Fair	Retain			32.50	8.67
715	American beech	Fagus grandifolia	25	Poor	Retain			31.25	8.33
716	American beech	Fagus grandifolia	19	Fair	Retain			23.75	6.33
718	sugar maple	Acer saccharum	25	Poor	Retain			25.00	8.33
719	sugar maple	Acer saccharum	23	Poor	Retain			15.33	7.67
722	sugar maple	Acer saccharum	23	Fair	Retain			15.33	7.67
724	sugar maple	Acer saccharum	22	Good	Retain			14.67	7.33
726	swamp white oak	Quercus bicolor	24	Fair	Retain			16.00	8.00
727	sugar maple	Acer saccharum	19	Fair	Retain			12.67	6.33
732	chinquapin oak	Quercus muehlenbergii	23	Poor	Retain			11.50	7.67
737	chinquapin oak	Quercus muehlenbergii	25	Good	Retain			16.67	8.33
744	sugar maple	Acer saccharum	25	Fair	Retain			25.00	8.33
745	tuliptree	Liriodendron tulipifera	34	Good	Retain			34.00	11.33
747	common hackberry	Celtis occidentalis	28	Poor	Retain			18.67	9.33
757	tuliptree	Liriodendron tulipifera	24	Fair	Retain			24.00	8.00
765	tuliptree	Liriodendron tulipifera	20	Good	Retain			13.33	6.67
767	tuliptree	Liriodendron tulipifera	36	Good	Retain			36.00	12.00
769	tuliptree	Liriodendron tulipifera	30	Fair	Retain			30.00	10.00
771	black walnut	Juglans nigra	49	Poor	Retain			73.50	16.33
773	swamp white oak	Quercus bicolor	25	Fair	Retain			16.67	8.33
797	Kentucky coffeetree	Gymnocladus dioicus	19	Good	Retain			9.50	6.33
806	common hackberry	Celtis occidentalis	46	Fair	Retain	23 23	Yes	30.67	15.33
807	black walnut	Juglans nigra	20	Fair	Retain			25.00	6.67
822	chinquapin oak	Quercus muehlenbergii	20	Fair	Retain			10.00	6.67
828	tuliptree	Liriodendron tulipifera	24	Good	Retain			24.00	8.00
850	common hackberry	Celtis occidentalis	45	Poor	Retain	21 24	Yes	45.00	15.00
855	common hackberry	Celtis occidentalis	19	Poor	Retain			9.50	6.33

Appendix C. Heritage Trees with Tree Protection Zones Table

862	American sycamore	Platanus occidentalis	33	Poor	Retain			33.00	11.00
866	American sycamore	Platanus occidentalis	25	Fair	Retain			25.00	8.33
867	American sycamore	Platanus occidentalis	32	Fair	Retain			32.00	10.67
869	black walnut	Juglans nigra	33	Fair	Retain			41.25	11.00
870	American sycamore	Platanus occidentalis	20	Fair	Retain			13.33	6.67
872	American sycamore	Platanus occidentalis	25	Poor	Retain			25.00	8.33
874	American sycamore	Platanus occidentalis	33	Fair	Retain			33.00	11.00
878	American sycamore	Platanus occidentalis	23	Poor	Retain			15.33	7.67
879	American sycamore	Platanus occidentalis	23	Poor	Retain			15.33	7.67
882	eastern cottonwood	Populus deltoides	24	Fair	Retain			24.00	8.00
886	eastern cottonwood	Populus deltoides	21	Fair	Retain			14.00	7.00
889	eastern cottonwood	Populus deltoides	32	Poor	Retain			32.00	10.67
899	eastern cottonwood	Populus deltoides	24	Fair	Retain			24.00	8.00
903	American sycamore	Platanus occidentalis	59	Fair	Retain			73.75	19.67
914	eastern cottonwood	Populus deltoides	53	Poor	Retain	35 18	Yes	53.00	17.67
915	eastern cottonwood	Populus deltoides	32	Fair	Retain			32.00	10.67
918	black walnut	Juglans nigra	23	Good	Retain			28.75	7.67
933	American sycamore	Platanus occidentalis	53	Good	Retain			66.25	17.67

Appendix D. Assumptions & Limiting Conditions

1. Information was obtained from reliable sources. All data had been verified as possible; the consultant can neither guarantee nor be responsible for the accuracy of information provided by others
2. The consultant shall not be required to give testimony or attend court by reason of this report unless subsequent contractual arrangements are made, including payment of an additional fee for such services as described in the fee schedule
3. Loss or alterations of any part of this report invalids the entire report
4. Possession of this report or a copy thereof does not imply right of publication or use for any purpose by any other than the person to whom it is addressed, without the prior expressed written or verbal consent of the consultant
5. This report represents the opinion of the consultant, and the consultant's fee is in no way contingent upon the reporting of a specified value, a stipulated result, the occurrence of a subsequent event, nor upon any finding to be reported
6. Sketches, diagrams, graphs, and photographs in this report, being intended as visual aids, are not necessarily to scale and should not be so construed as engineering or architectural reports or surveys
7. Unless expressed otherwise, information contained in this report covers only those items that were examined and reflects the conditions of those items at the time of inspections. There is no warranty or guarantee, expressed or implied, that problems or deficiencies of the plants or property in question may not arise in the future.
8. A tree risk assessment was not performed as part of this project.

Appendix E. Certification of Performance

I, Todd Gillian, certify that:

- I have personally inspected the trees and property referred in this report and have stated my findings accurately.
- I have no current or prospective interest in the vegetation or the property that is the subject of this report and no personal interest or bias with respect to the parties involved
- My analysis, opinions, and conclusions were developed, and this report has been prepared according to commonly accepted arboricultural practices.
- No one provided significant professional assistance to me, except as indicated within the report
- My compensation is not contingent upon the reporting of a predetermined conclusion that favors the cause of the client or any other party nor upon the results of the assessment, the attainment of stipulated results, or the occurrence of any subsequent events

I further certify that I am a member in good standing of the American Society of Consulting Arborist and the International Society of Arboriculture. I have been involved in the field of Arboriculture in a full-time capacity for a period of more than 12 years.

Signed: Todd Gillian

Dated: 03-28-2022